



Gervais Fire Station & Regional Emergency Preparedness Facility



Capital Funding Request Executive Summary

The Woodburn Fire District (WFD) is requesting \$5,070,710 of capital funding for the development of a new fire station in Gervais that will improve fire protection and emergency medical response to an underserved community, help meet the regional needs for large scale disaster preparedness and response, and address the requirements of the extensive industrial development and population growth that is occurring in the region.

Project Matching Funds

The WFD Board of Directors has allocated \$2,529,811 of district bond funds for the construction of the Gervais Fire Station & Regional Disaster Preparedness Facility. The bond revenue has been collected and is ready for disbursement. The total project cost is \$7,600,521.

Project Timeline

This project is shovel ready. Five acres of land have been purchased by the fire district in the Gervais community and the site has been approved for a fire station by Marion County Land Development. The project start is planned for early 2024. The project general contractor and the architectural and engineering firms have been selected and have provided concept drawings, site plans and detailed cost estimates.

Improve Emergency Response to National Standards

The Gervais community that is 81% Hispanic is currently underserved for emergency response to fire and medical emergencies. The establishment of the new fire station will improve response times from the current (10) minutes to less than (4) minutes which will allow compliance with national response time standards that improve life safety for residents of the Gervais community. Additionally, the proximity of the fire station site to existing and planned traffic arterials will allow rapid response from this location to all areas of the 75 square mile fire district as well as mutual-aid responses to neighboring fire districts in the surrounding region.

Preparation for Extensive Industrial Development & Population Growth

The Gervais fire station site is also well positioned to serve the future emergency response needs of the rapidly expanding residential and industrial areas of south and west Woodburn. With more than 3,300 new housing units under development, the current fire district population of 39,000 residents is expected to increase by 20% over the next 5-10 years. The project site is approximately 1 mile from the 3.8 million square foot Amazon warehouse and is adjacent to the industrial urban growth expansion area being requested by Woodburn.

Provide CERT Facility for Large Scale Disaster Preparedness and Response

The requested funding will provide a facility that will leverage the equipment and personnel resources of the 50 member WFD volunteer CERT (Community Emergency Response Team) that will strengthen the regional disaster preparedness and response capability to large scale emergencies in the following ways:

- ◆ Regional Center for Fire Skills & Disaster Preparedness Training
- ◆ Emergency Evacuation Center / Gervais Community Meeting Room
- ◆ Woodburn/Gervais CERT Program Administrative Office Space & Disaster Response Equipment Storage
- ◆ Regional Emergency Fuel Storage & Distribution Facility
- ◆ Regional OEM SPIRE Grant Funded Portable Water Distribution Trailer Staging and Support



Gervais Fire Station & Regional Emergency Preparedness Facility

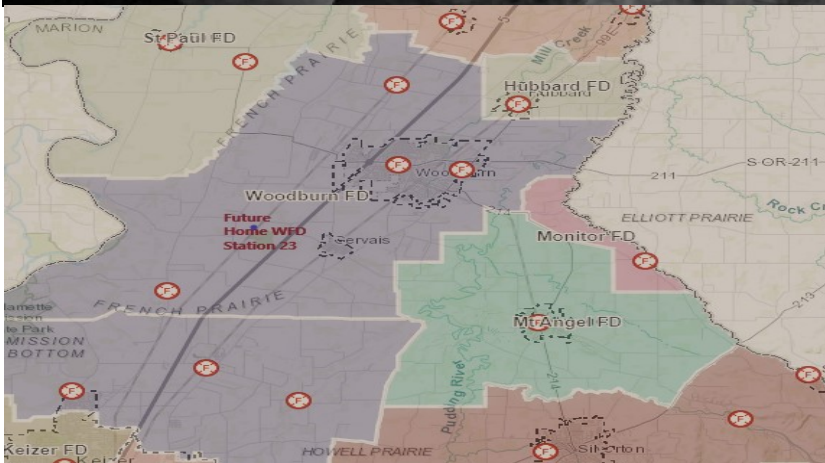


Table of Contents

Project Description & Need	3
Community & County Benefits	4
Project Timeline	5
Project Budget	6
Land Purchase & Use Approvals	7
Architectural Rendering	8
Elevation & Land Development Plans	9
Economic Development Map	10
Urban Growth Boundary	11
Residential Dev. & Increased Emergency Response	12
Emergency Response Times	13
Compliance with National Standards	14
Emergency Response Routes	15
Local & Regional Response & Preparedness	16
Emergency Fuel Tank Storage	17
Emergency Water Supply Storage	18
Regional Training Center	19
District Overview	20
Woodburn Firefighters	21
Volunteer Program	22
Community Emergency Response Team	23
(ISO) Insurance Ratings	24
Fire District Tax Comparisons	25
Current Tax Burden	26
Letters of Support	27
Capital Funding Request	28

Gervais Fire Station & Regional Disaster Preparedness Center

Project Description

The Woodburn Fire District is requesting partial funding for the construction of a new 6,200 square foot fire station in the community of Gervais with 24/7 accommodations for on-duty firefighters. The proposed station includes a CERT (Community Emergency Response Team) office, equipment storage and a Gervais community meeting room. Site improvements include an emergency generator, above ground fuel and water tanks for regional disaster response and a 45,000 square foot concrete training pad with fire training tower.

Project Need

The Gervais community is currently underserved for fire protection and emergency medical response. The current response time to this community exceeds 10 minutes from existing fire stations which is nearly double the recommended fire response standard established by the National Fire Protection Association (NFPA 1710); the nationally recognized industry standard. The development of this site that is located less than one mile from the new Amazon Fulfillment Center will proactively meet the future fire protection and emergency response needs of the Gervais and Woodburn communities that is expected to increase 21% over the next five years. Response from this site will also improve fire protection response for the residents of three (3) adjacent fire districts under existing automatic mutual-aid agreements. All three districts have provided letters of support for this project. This project will also serve as a regional center for disaster preparedness and response. The site will include CERT office space and equipment storage, an above ground fuel tank for emergency fuel distribution and a community room with an emergency generator that will serve as community meeting/training room and refuge center.

Community & County Benefits



“We cannot stop natural disasters but we can arm ourselves with knowledge: So many lives wouldn’t have to be lost if there was enough disaster preparedness.”

- Petra Nemcova

- ◆ Improved response times to the Gervais community & south end of the fire district.
- ◆ Preparation for extensive future growth.
- ◆ Gervais CERT equipment storage.
- ◆ CERT program Office Space.
- ◆ Gervais community meeting room.
- ◆ Regional emergency fuel storage & distribution.
- ◆ Regional grant funded water distribution portable trailer storage.
- ◆ Regional training center for North Marion county.
- ◆ Insurance service office rating improvement

Gervais Fire Station & Regional Disaster Preparedness Center

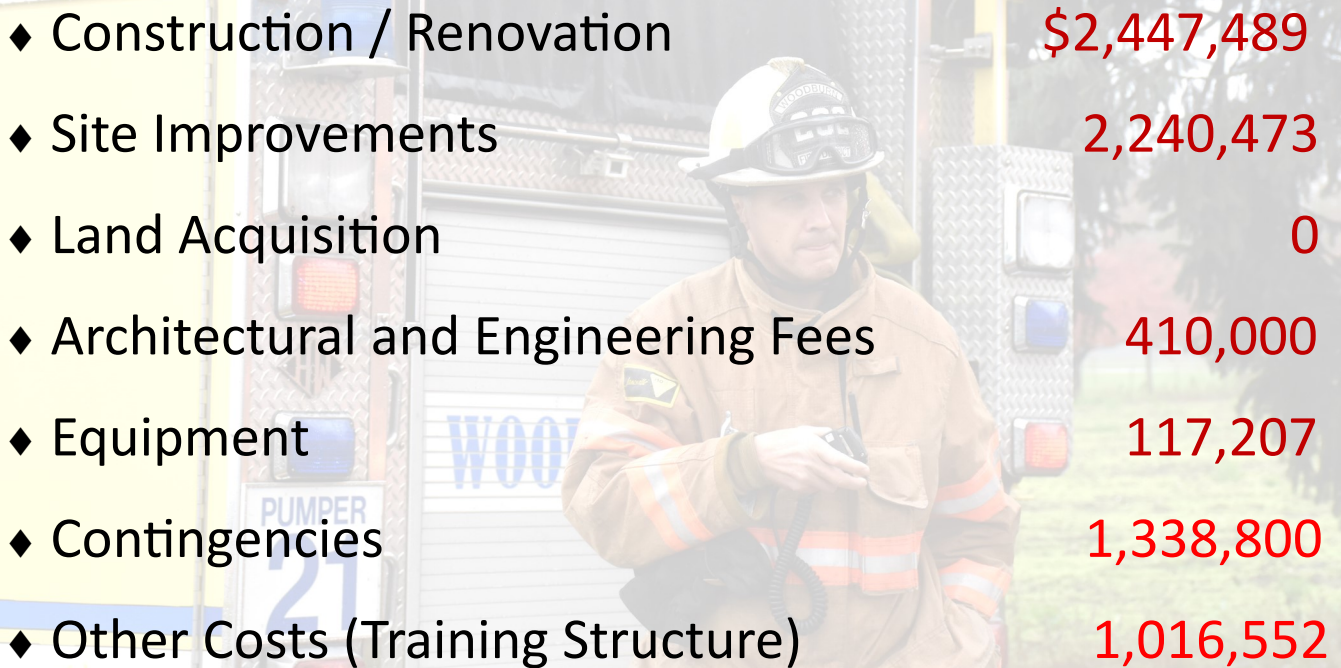
Project Timeline

This project is shovel ready. Five acres of land have been purchased by the fire district in the Gervais community and the site has been approved for a fire station by Marion County. The project is in the early design stages with a planned start for early 2024 and completion in the fall/winter of 2024. The fire station floor plan, site plan, and elevations have all been completed. The general contractor, architectural and engineering firms have been selected and have provided the concept drawings and detailed cost estimates for the project.

Secure Matching Funds <i>(completed)</i>	Spring 2021
Purchase Land <i>(completed)</i>	Spring 2022
Building Permit Approved <i>(completed)</i>	July 2022
Select Architect & General Contractor <i>(completed)</i>	Dec 2022
Finalize Station Plans & Begin Construction	Fall 2023
Complete Construction	Fall/Winter 2024

Gervais Fire Station & Regional Disaster Preparedness Center

Project Budget



◆ Construction / Renovation	\$2,447,489
◆ Site Improvements	2,240,473
◆ Land Acquisition	0
◆ Architectural and Engineering Fees	410,000
◆ Equipment	117,207
◆ Contingencies	1,338,800
◆ Other Costs (Training Structure)	1,016,552

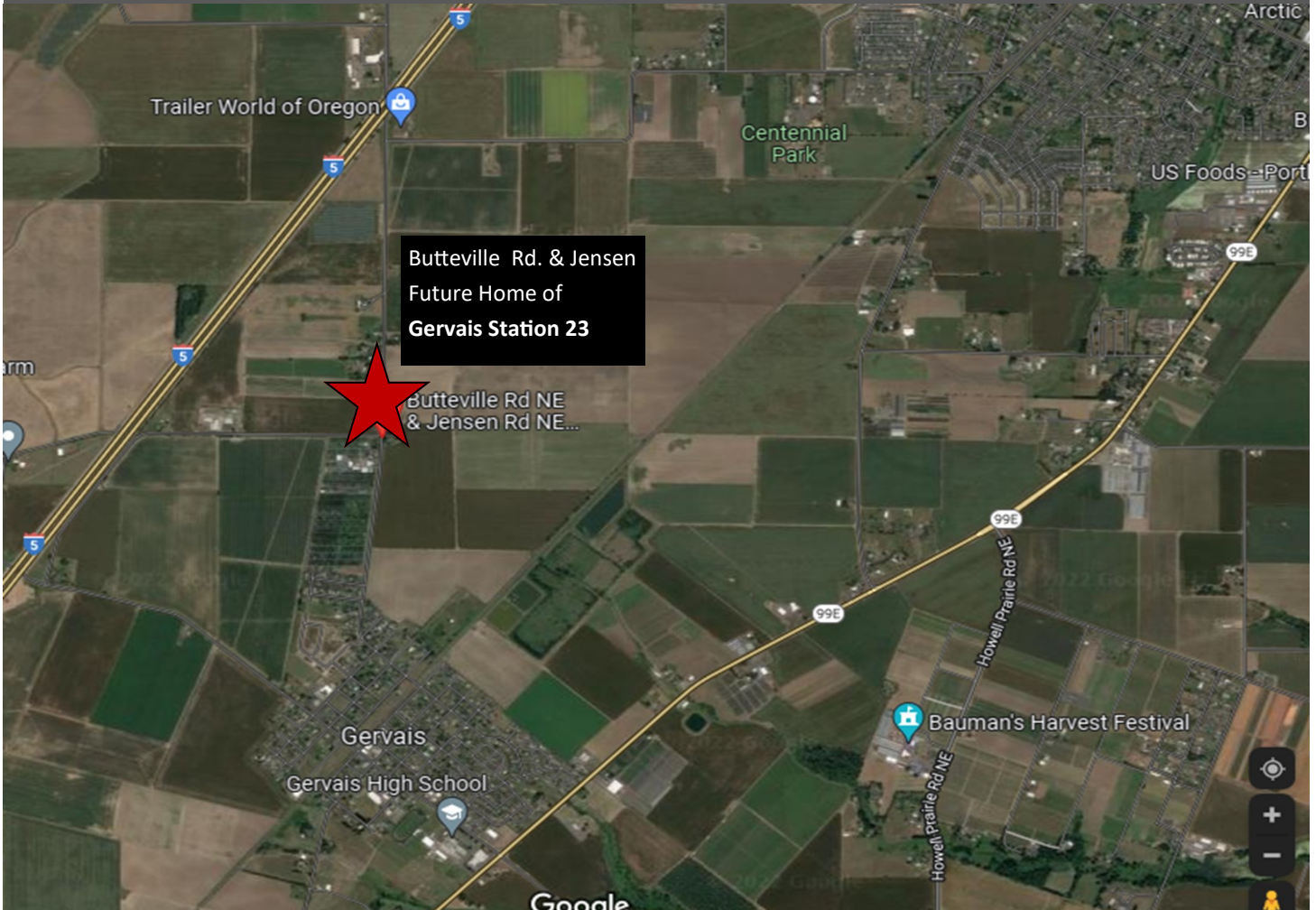
Total Project Costs: \$7,600,521

Amount Requested: \$5,070,710

Total Matching Funds: \$2,529,811*

*The residents of the fire district are providing 33% of the project funding through a bond measure approved in 2021. The bond funds have been collected and the fire district board of directors have allocated \$2,529,811 of matching funds.

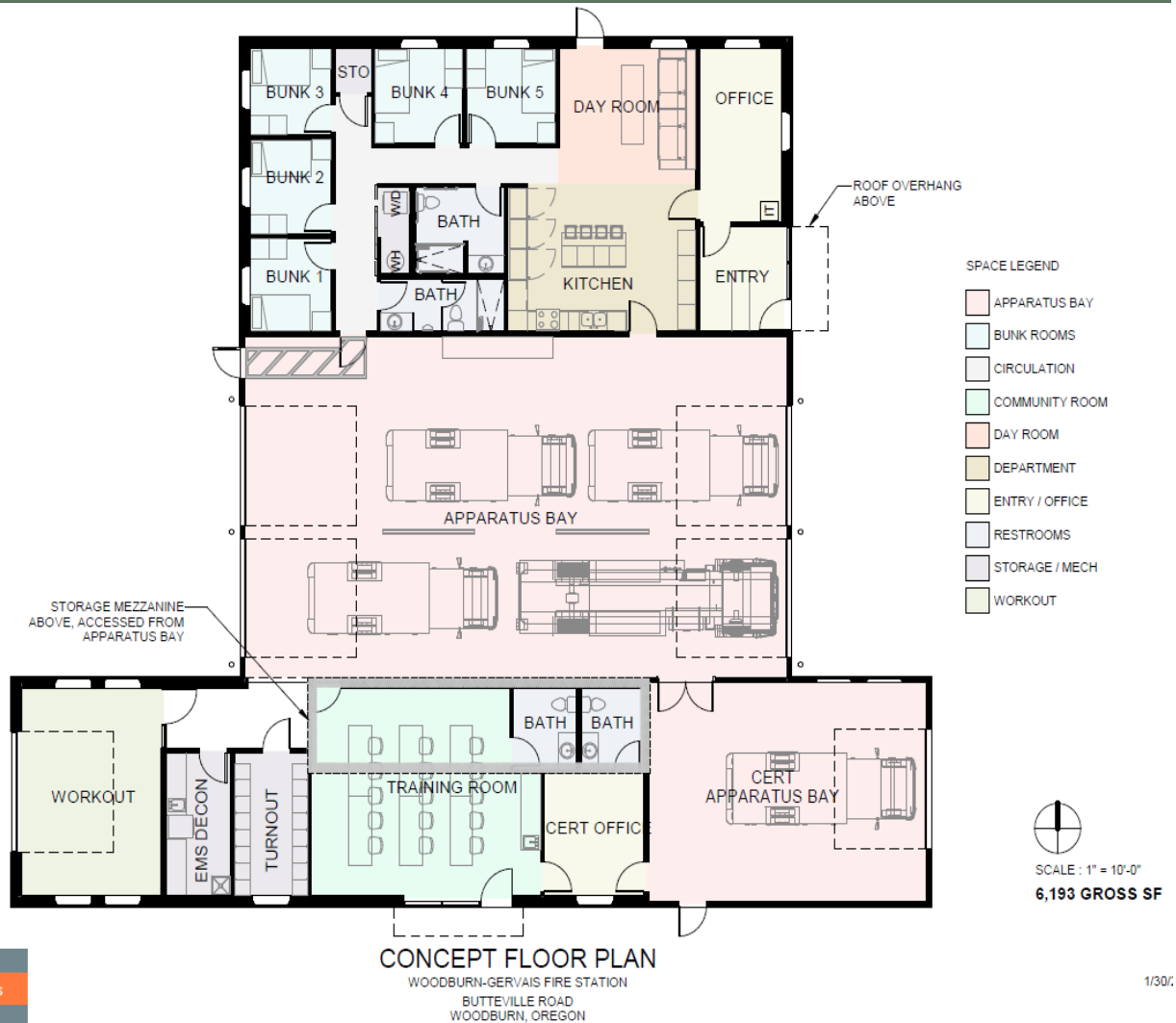
Land Purchase & Use Approval



Voters approved a bond, in 2021 for the establishment of a new fire station in the community of Gervais. The Woodburn Fire District has purchased 5 acres of land just north of the City of Gervais on Butteville Rd. The site has been approved by Marion County for the construction of a new fire station. The location of the station in this area is well positioned for community growth for decades to come.



Architectural Rendering of Gervais Fire Station



ARCHITECTURE
ORANGEWALLstudios
 PLANNING

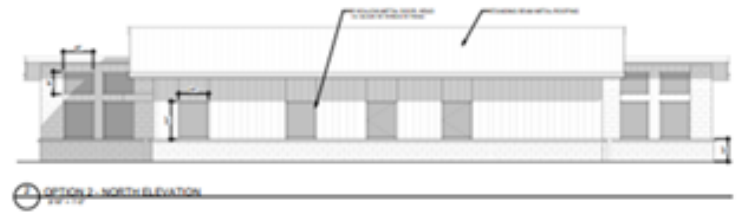
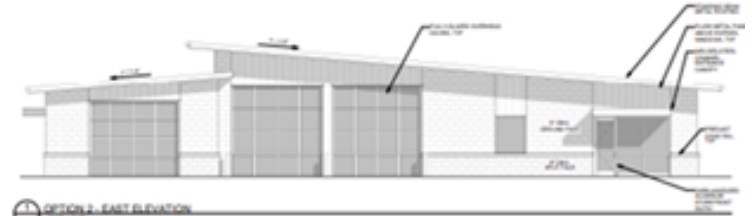
1/30/21

Apparatus Bay—The proposed fire station will have a double deep double wide apparatus bay that will accommodate a full compliment of fire apparatus including and engine, water tender, and brush unit. All of the apparatus needed for the station are either currently included in the Woodburn Fire District fleet or will be added with available bond funds. The apparatus bay at the lower left of this diagram shows an area for a CERT response trailer that has already been provided to the Gervais community by the State of Oregon.

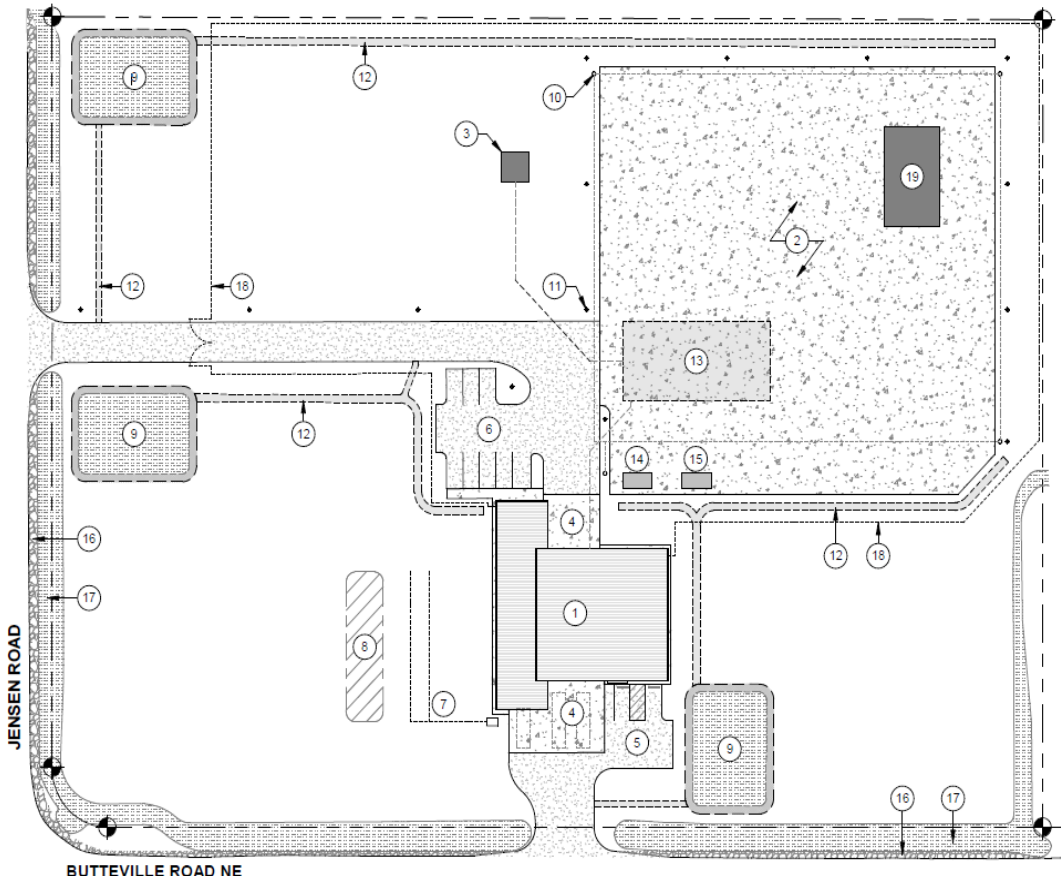
Community Meeting / Training Room—The proposed station will include a meeting room for the Gervais community that is currently lacking in meeting facilities. This space will also double as a CERT and fire training room.

Living Quarters—The station includes a small kitchen, living room and sleeping quarters for up to (5) firefighters. The station will be initially staffed by (3) student resident volunteer firefighters. The extra rooms will be used by out-of-district volunteer firefighters that occasionally pull duty shifts at fire district stations. This station will eventually become staffed by career firefighters as the population of the area grows over the coming decade.

Architectural Elevation Plans



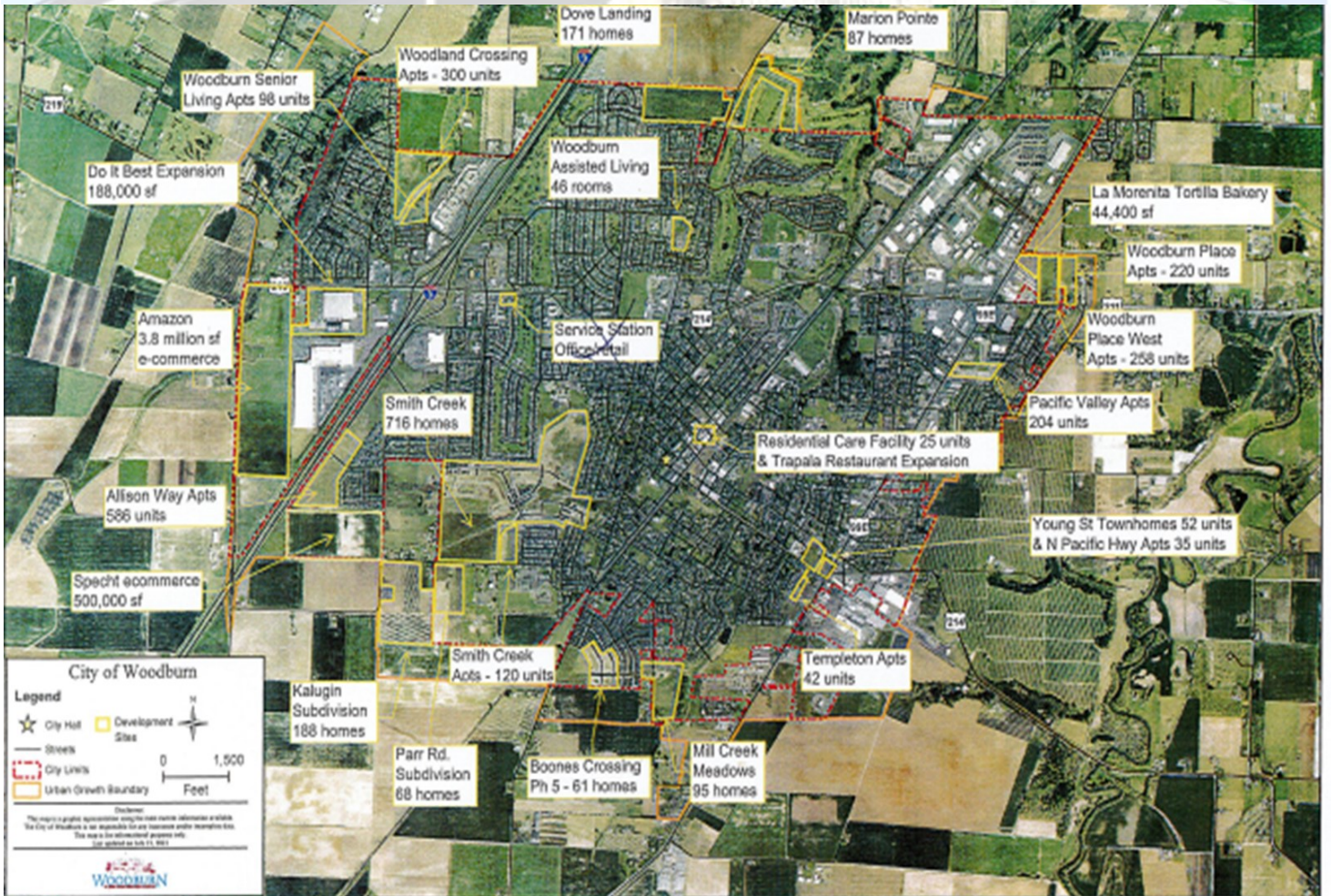
Land Development Site Plan



KEYNOTES - SITE PLAN

- 1 PROPOSED NEW FIRE STATION BUILDING WITH CERT WING
- 2 200'X200' CONCRETE TRAINING PAD WITH SITE LIGHTING AT PERIMETER. SLOPE EAST-WEST TO DRAINAGE DITCHES.
- 3 WELL HOUSE OUTBUILDING
- 4 CONCRETE DRIVE
- 5 PUBLIC PARKING
- 6 EMPLOYEE PARKING
- 7 SEPTIC SYSTEM
- 8 SEPTIC RECHARGE AREA
- 9 STORMWATER FACILITY
- 10 (4) FIRE HYDRANTS ON LOOP AT EDGES OF TRAINING PAD
- 11 SITE LIGHTING AT TRAINING PAD AND DRIVEWAYS
- 12 SITE STORMWATER DRAINAGE DITCH
- 13 SUB-GRADE 30,000 GALLON WATER CISTERN WITH DRAFT PIT
- 14 ABOVE-GRADE FUEL TANK & REFILL STATION
- 15 STANDBY GENERATOR WITH ATS
- 16 GRAVEL SHOULDER ALONG STREET FRONTAGE
- 17 FRONTAGE DITCH IMPROVEMENTS
- 18 4' HIGH CHAINLINK FENCE WITH GATE AT ENTRY OFF JENSEN ROAD
- 19 TRAINING TOWER ON PIER FOUNDATIONS

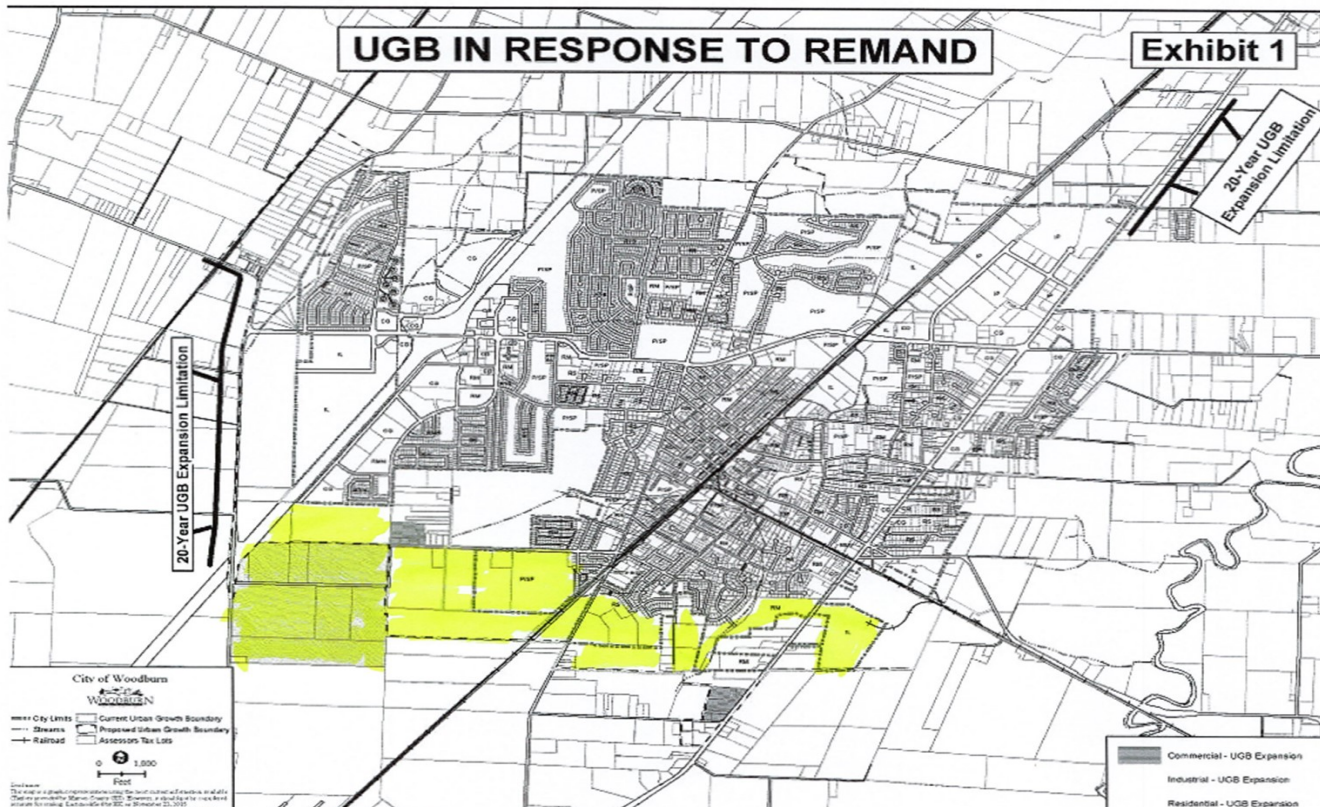
Woodburn Economic Development Map



Rapid Community Growth — The Woodburn and Gervais communities are growing rapidly. The map shown above indicates the current residential, commercial and industrial projects currently underway that include 3,300 dwelling units. A 20% increase in population is expected over the next 5-10 years.

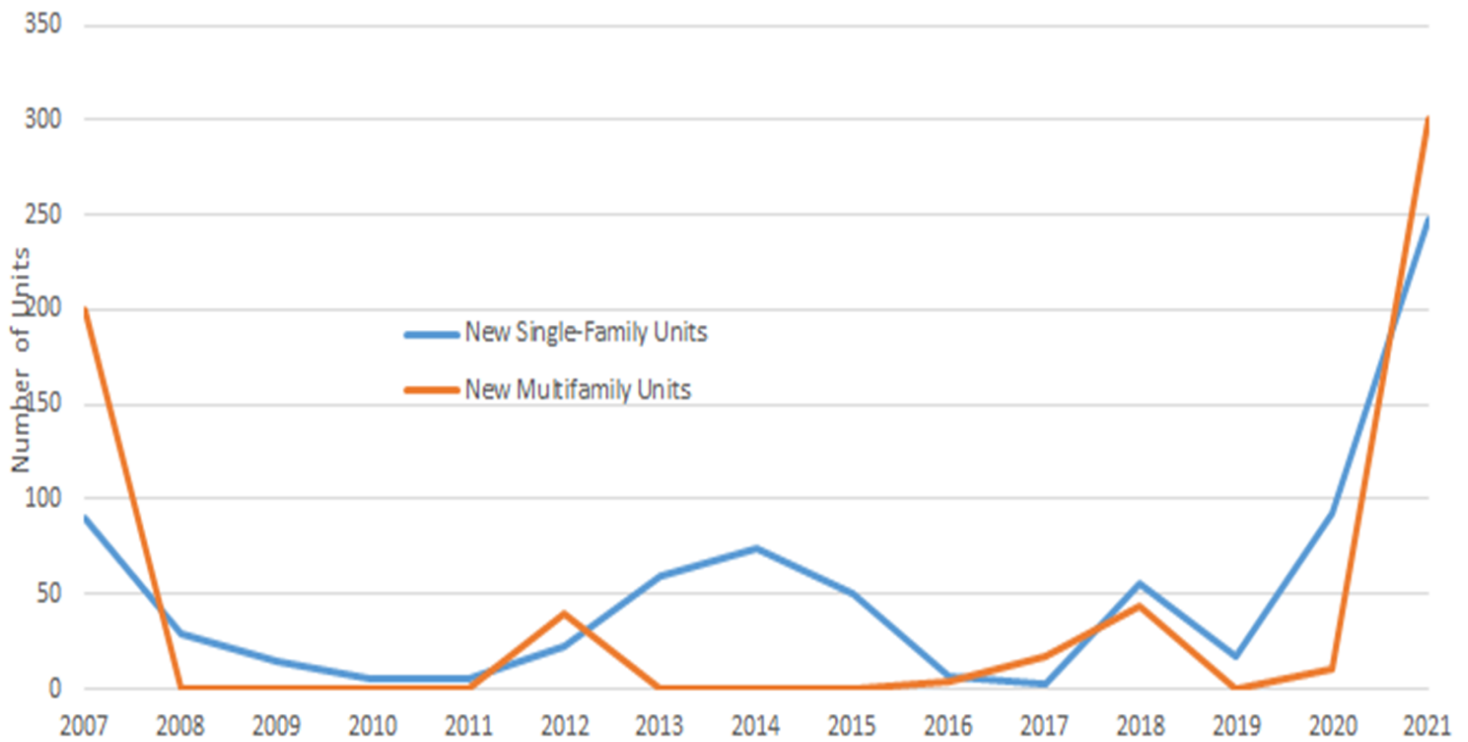


Extensive Urban Growth—An important factor when establishing a new fire station is proximity to the expanding population and industrial development areas. The areas shaded in yellow represent the urban growth area for the city of Woodburn that is expected to be filled with new private residences within the next ten years. The shaded area at the SW corner of the map indicates reserve areas that are in the process of being added to the WFD urban growth boundary. All of the shaded area west of the union pacific railroad that bisect the city of Woodburn are within the 4 minute response from the new Gervais Fire Station.

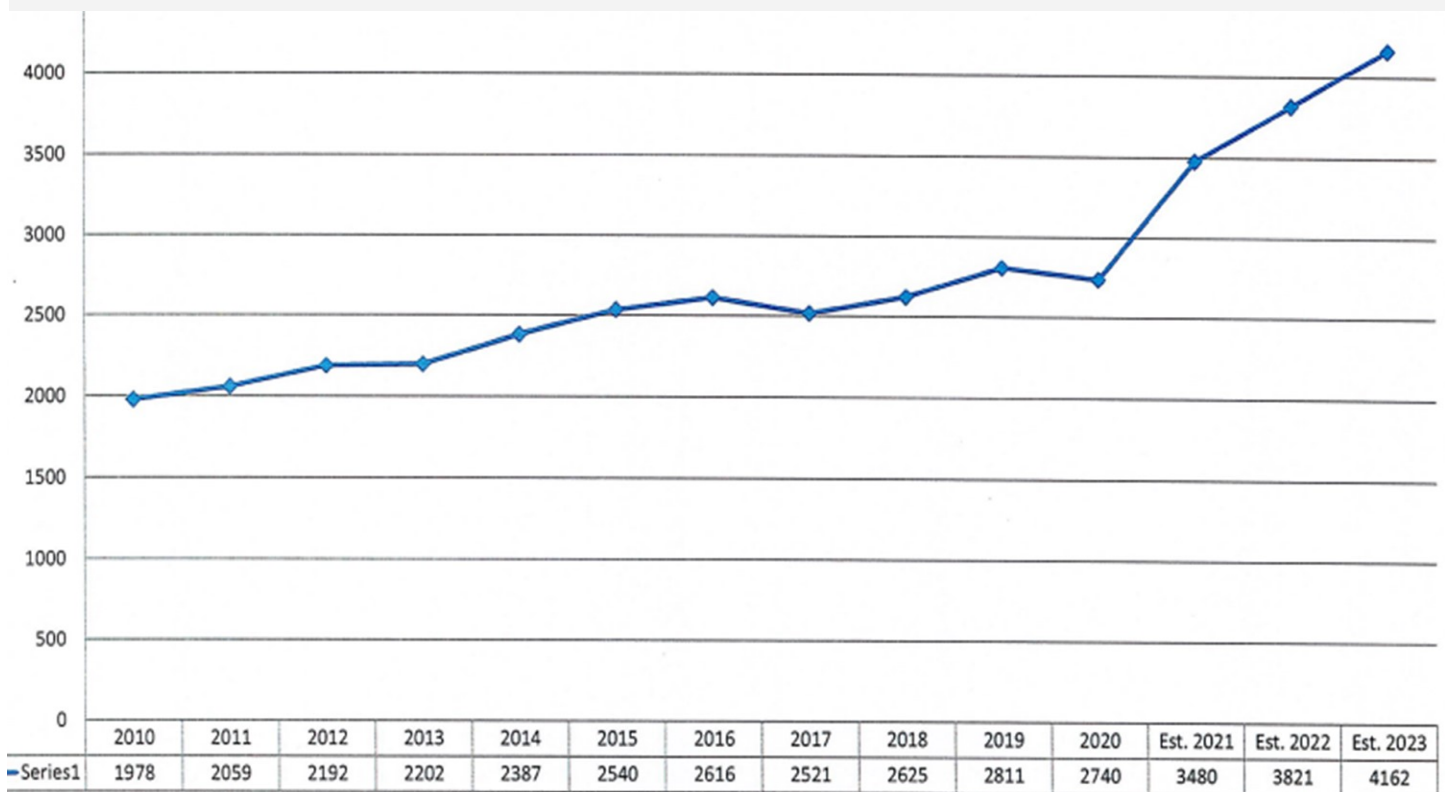


**“IT WASN’T RAINING WHEN NOAH BUILT THE ARK.”
-Howard Huff**

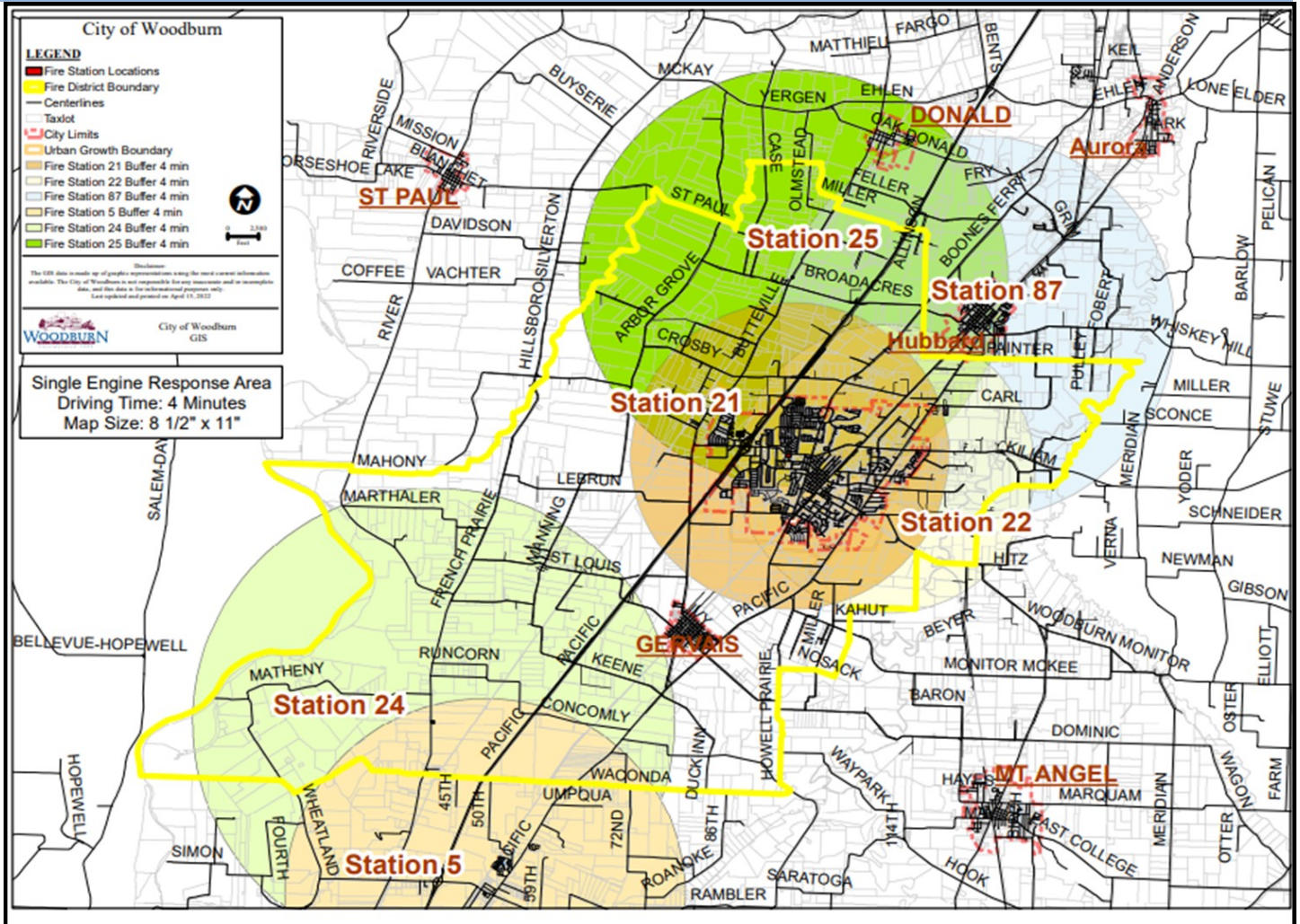
Woodburn New Housing Permits — This chart prepared by the City of Woodburn Planning & Development department illustrates the dramatic surge in new housing permits that occurred in 2021. The new number of permits has continued and shows no signs of slowing.



EMERGENCY RESPONSE INCREASE — The graph below shows the emergency response totals for the Woodburn Fire District. The 2021 surge directly corresponds with the surge in new residents and is expected to continue with an estimated 20% increase in residents in the next 5-10 years.



Current Emergency Response Times

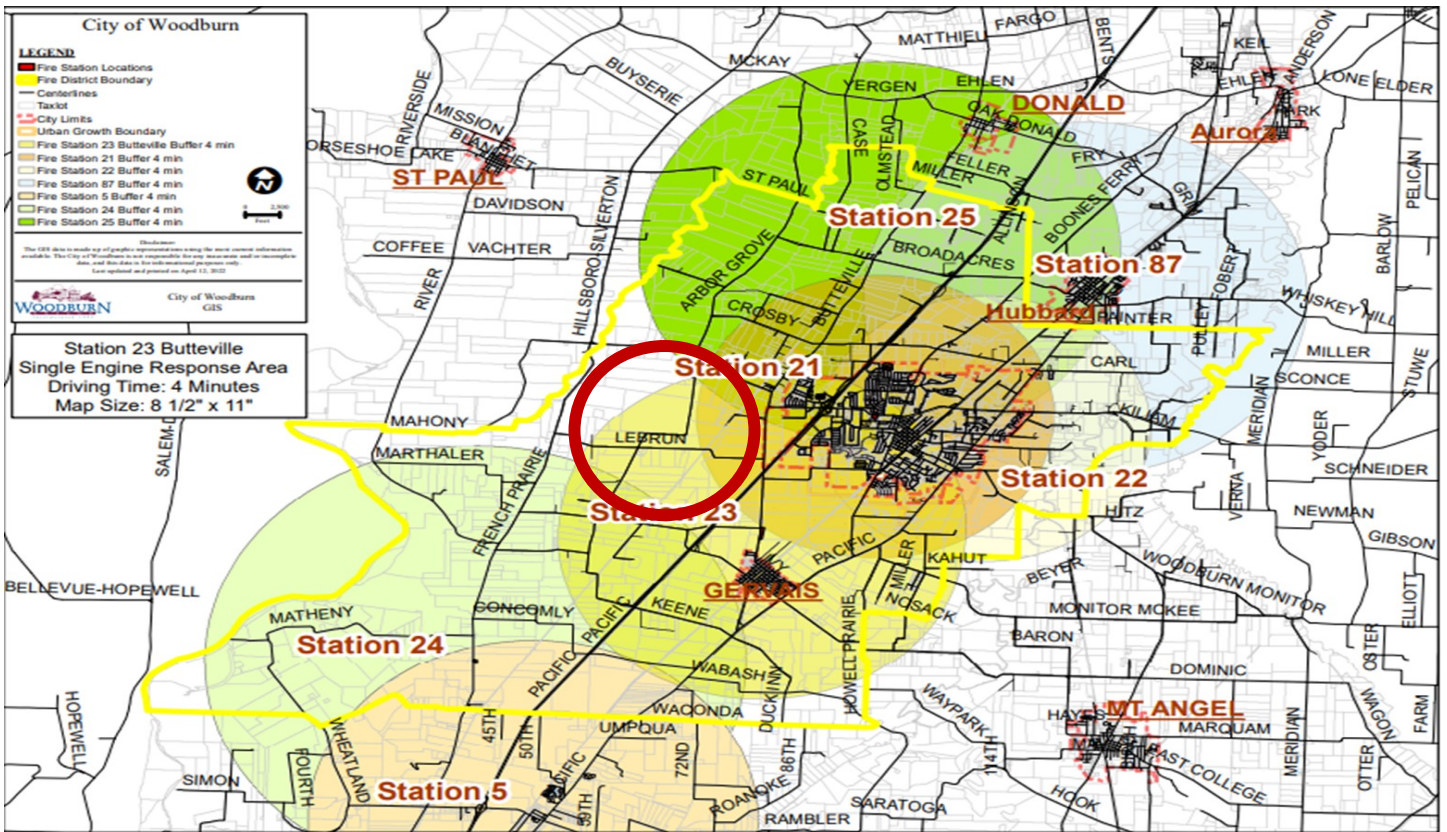


Primary Considerations When Establishing A Fire Station

Location—The new Gervais fire station will improve responses to an underserved community. The current response time to Gervais exceeds 10 minutes from existing fire stations. This is nearly double the recommended fire response standard established by the National Fire Protection Association (NFPA 1710); the nationally recognized industry standard.



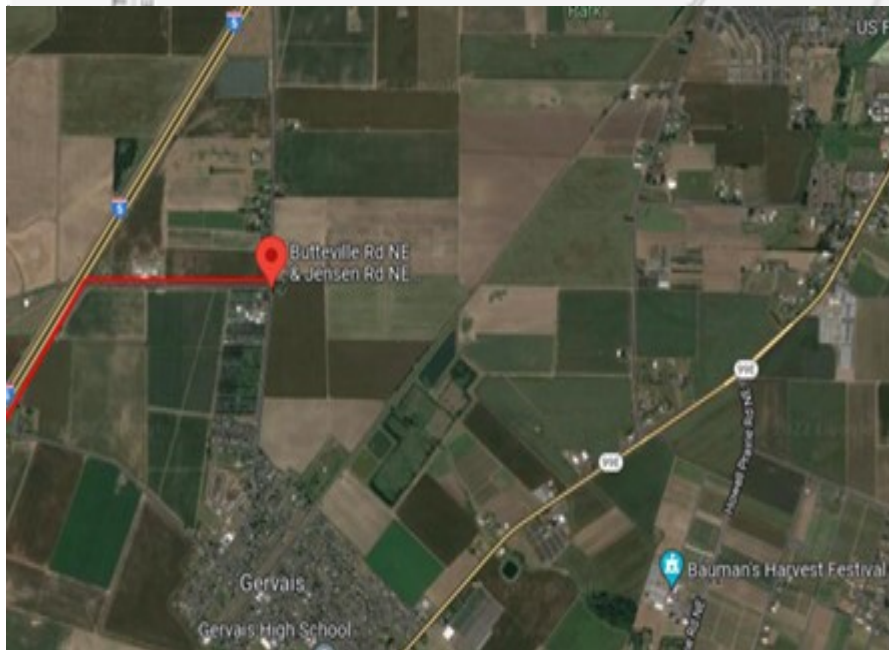
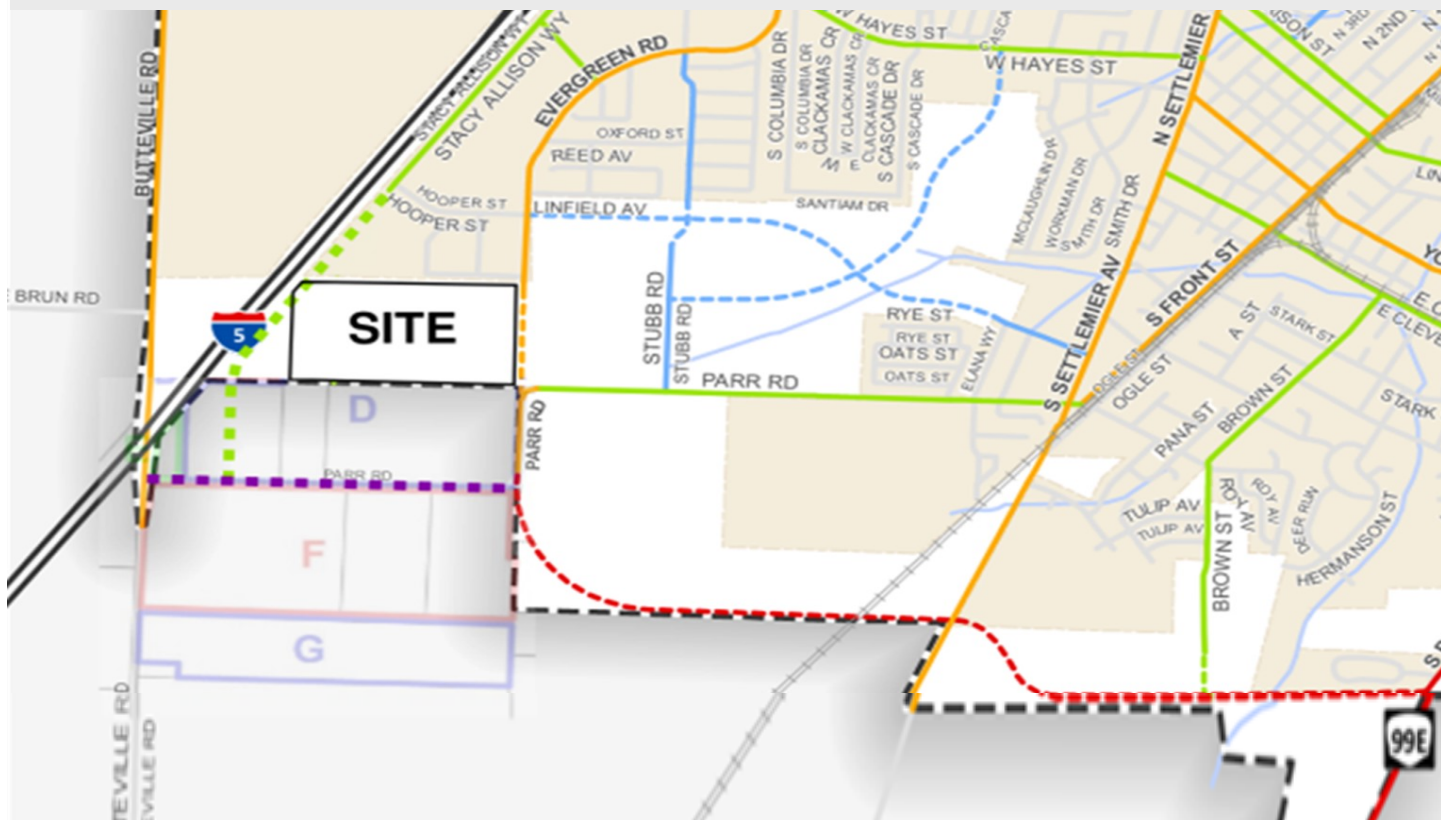
Compliance with National Response Standards—With the addition of the new Gervais station, all areas of the Gervais community and most of the western edge of the fire district will be brought within the 4 minute NFPA time standard.



4 Minute Station Response Areas With New Station



Emergency Response Routes North & East—Another important factor in the placement of a new station is access to emergency response routes for quick access to all parts of the fire district. In addition to Butteville Rd. that provides good access to the northwest areas of Marion County, the fire station property is near a planned new traffic collector that will run along the southern edge of Woodburn’s urban growth boundary. The new traffic collector, that will intersect with Butteville Rd. just north of the new fire station site, will connect with OR 99E and allow good access to all areas of the fire district and rapid response to mutual aid jurisdictions to the north and east.



Emergency Response Routes South & West

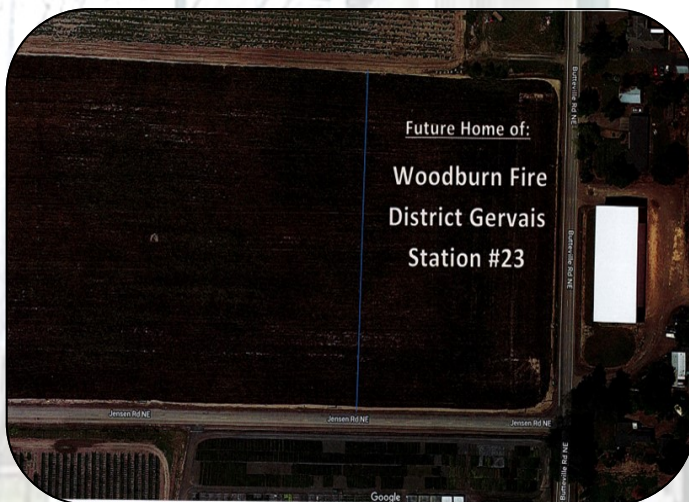
The new station location also allows quick access to the SW corner of the fire district via Jensen Road connection to St. Louis Road at the St. Louis freeway overpass.

Local & Regional Emergency Response & Disaster Preparedness

In addition to the fire station, the 5 acre site at the corner of Butteville & Jensen Rd. is large enough to accommodate a training facility and serve as a regional staging and training area for emergency response and disaster preparedness equipment.

“Preparation through education is less costly than learning through tragedy.”

- Max Mayfield



Regional Disaster Preparedness



2000 Gallon Fuel Storage Tank for Fueling Emergency Response Equipment, Facility Generators & Public Works Equipment

The project includes the siting of an above ground fuel tank that will be used for the daily operational needs of the fire district and serve as an emergency fuel supply in the event of a regional disaster. During the 2021 ice storm, all of the commercial fueling sites in the area that are used by the fire district were out of service due to the loss of electrical power. In addition, emergency generators at the district stations and the Gervais city hall began running out of fuel by the 5th day of the 10 day power outage. In the event of a large scale disaster, this fuel site and a 500 gallon fuel transport trailer will be operated by volunteer firefighters and CERT members that will keep emergency response equipment, critical facility generators and public works equipment fueled until out-of-the area fuel sources are established.

Emergency Water Supply

The Woodburn Fire District has been awarded a 2022 SPIRE grant for a 500 gallon portable water trailer that will provide emergency water supply in the event of a large scale disaster that disrupts or contaminates water distribution systems. This funding request includes a secure storage area for this trailer and a 500 gallon fuel trailer that will be purchased with requested funds. Volunteer firefighters and CERT members will transport water and fuel to the surrounding area during a large scale emergency.



500 Gallon Portable Emergency Supply Water Trailer

Grant funded by Oregon Emergency Management & Awarded to WFD



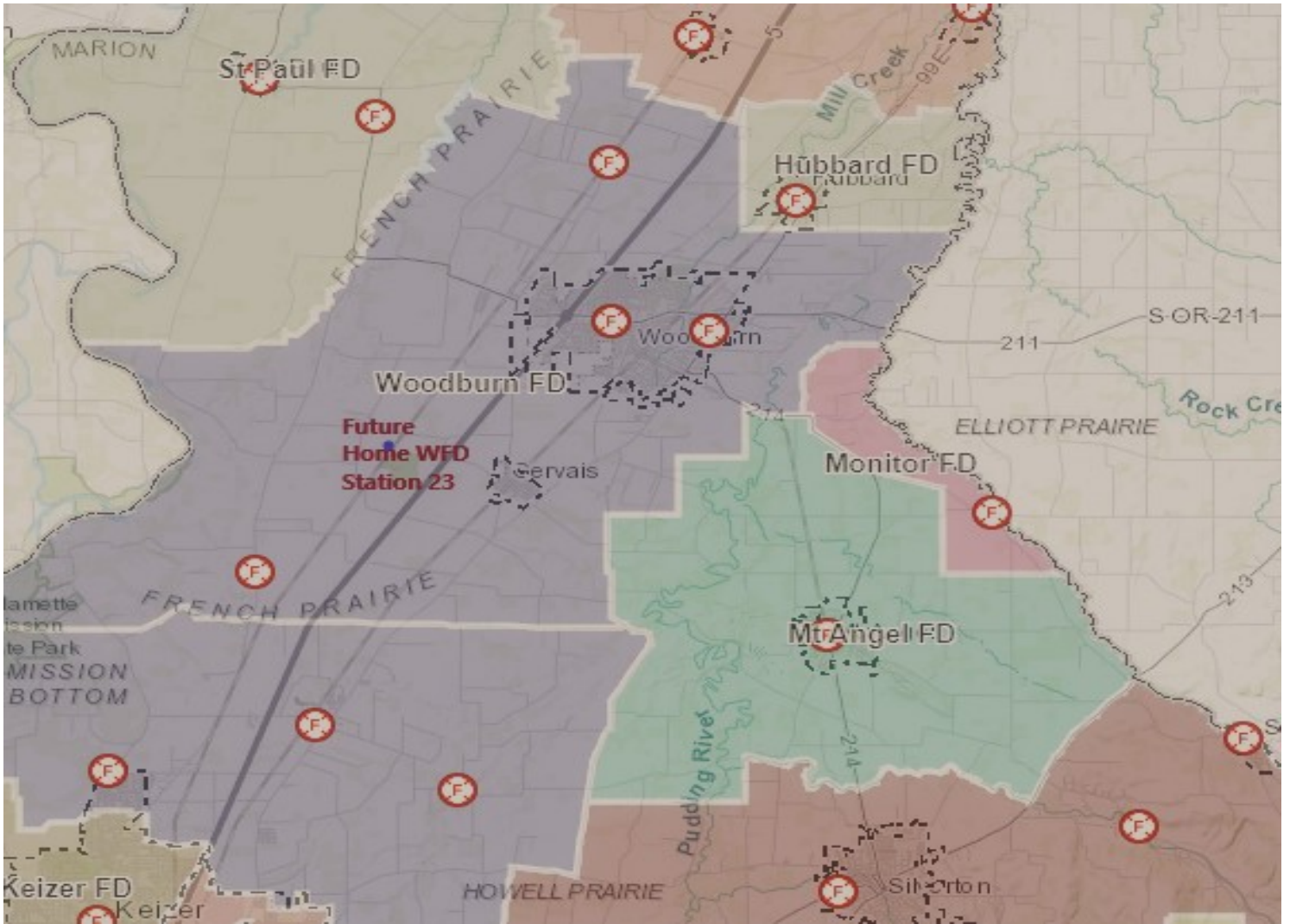
Regional Fire Training Center

Facility Available for Northern Marion County Fire Agencies



Regional Fire Training Structure—Included in the request is funding is a fire training structure that will be used by firefighters throughout the region. The request includes a burn room for live fire training exercises that is a requirement to certify firefighters for entry into burning structures. The Woodburn Fire District does not currently have a training facility and must travel to Brooks or Silverton to use the training structures located in those communities for critical firefighter training sessions. The travel out of district becomes an issue for emergency response coverage for the Woodburn community that only has one engine staffed on a daily basis. Additionally, the Brooks facility is in constant use by the Chemeketa Fire Program and time on the drill ground is difficult to schedule.

ISO Rating Maintenance & Improvement—Frequent use of a training facility by all district firefighters with a minimum of a three-story training structure is required for the maintenance and improvement of the fire district ISO rating as discussed later in this information.



Fire District Overview

- The Woodburn Fire District covers 75 square miles including the cities of Woodburn, Gervais, Waconda and Broadacres. The population of the district is 40,000 residents.
- The I-5 and Union Pacific railway corridors run through the middle of the fire district north to south.
- Woodburn Fire responded to over 3,337 emergency incidents in 2022.
- The Woodburn Fire District has 9 mutual aid agreements with surrounding fire districts in north Marion County and South Clackamas County.
- Mutual Aid agreements are also in place with all 19 fire agencies in Marion County for the sharing of resources when requested. These agreements were instrumental in the rapid response to the 2020 wildfires that saved lives and structures in the Santiam Canyon and Cascade foothills near Molalla. In 2022, the mutual-aid agreements also helped to save homes in the south Salem area threatened by the Vitae Springs fire.

Woodburn Firefighters



The Woodburn Fire District has 16 career firefighters that work on four person engine companies 24 hours a day 365 days a year. A second 4 person company staffs an engine out of Station 22 on one of the three shifts. Each shift is comprised of one lieutenant, one paramedic and two engineers (firefighters).

The district’s ratio of career firefighters to residents is 0.40 per thousand. According to the NFPA (National Fire Protection Association) the national average is 1 firefighter per every thousand residents. Recognizing that the district is staffed well below the national average, the **main budget priority for the fire district is the hiring of additional firefighters.**

Thirty trained volunteers complete the district firefighting staff. Volunteer firefighters cover overlapping calls and respond on those incidents that require multiple resources to mitigate. Volunteers also assist with community outreach.

“The main budget priority of the fire district is the hiring of additional firefighters to meet the rapidly growing emergency response demand in the communities served”

Volunteer Emergency Response & Preparedness



Volunteer Recruit Class—Nov. 2022

Student Resident Programs -Over the past 5 years the Woodburn Fire District has provided 10 students the opportunity to participate in a full-time student resident program. This program provides housing, tuition assistance, certification training and emergency response experience. Of those 10; 4 are currently enrolled in fire science programs, 2 are continuing their education through paramedicine programs, and 3 have accepted full time career fire positions with various districts.

Once the construction of Gervais Fire Station is complete, the initial staffing will be provided by student resident firefighters. The district anticipates having enough career firefighters to staff the station within the next 5-10 years.

Volunteer Programs -Without the assistance of volunteer firefighters, the Woodburn Fire District would not be able to meet the emergency response needs of the community. Volunteers respond to overlapping calls and those incidents that require more than one resource to mitigate. As part of the active volunteer firefighter program, district leaders teach training academies several times a year. The training requires 148 hours of classroom lecture and drill ground skills practice to obtain certification as an entry level firefighter.



The Woodburn Fire District sponsors a very active CERT program that includes 50 volunteers. The Community Emergency Response Team (CERT) is a FEMA program that provides organizational structure for community based volunteers that are mobilized in the event of large scale disasters. During regional events, CERT members handle low level emergencies and public first-aid to free up first responders for critical calls. During the 2020 fire season CERT members assisted with the care and comfort of Santiam Canyon refugees that were gathered at the state fairgrounds. During the February 2021 ice storm, CERT members canvassed neighborhoods to assist shut-in seniors with oxygen replacement, medication and food and distributed carbon monoxide detectors to those that were using portable generators for heating and cooking. During the COVID-19 pandemic CERT members delivered 55 tons of food to at risk community members over a 10 month period. These teams are invaluable and will be instrumental in the saving of lives in response to a Cascadia earthquake.

Woodburn's CERT team is one of the most active in the state.

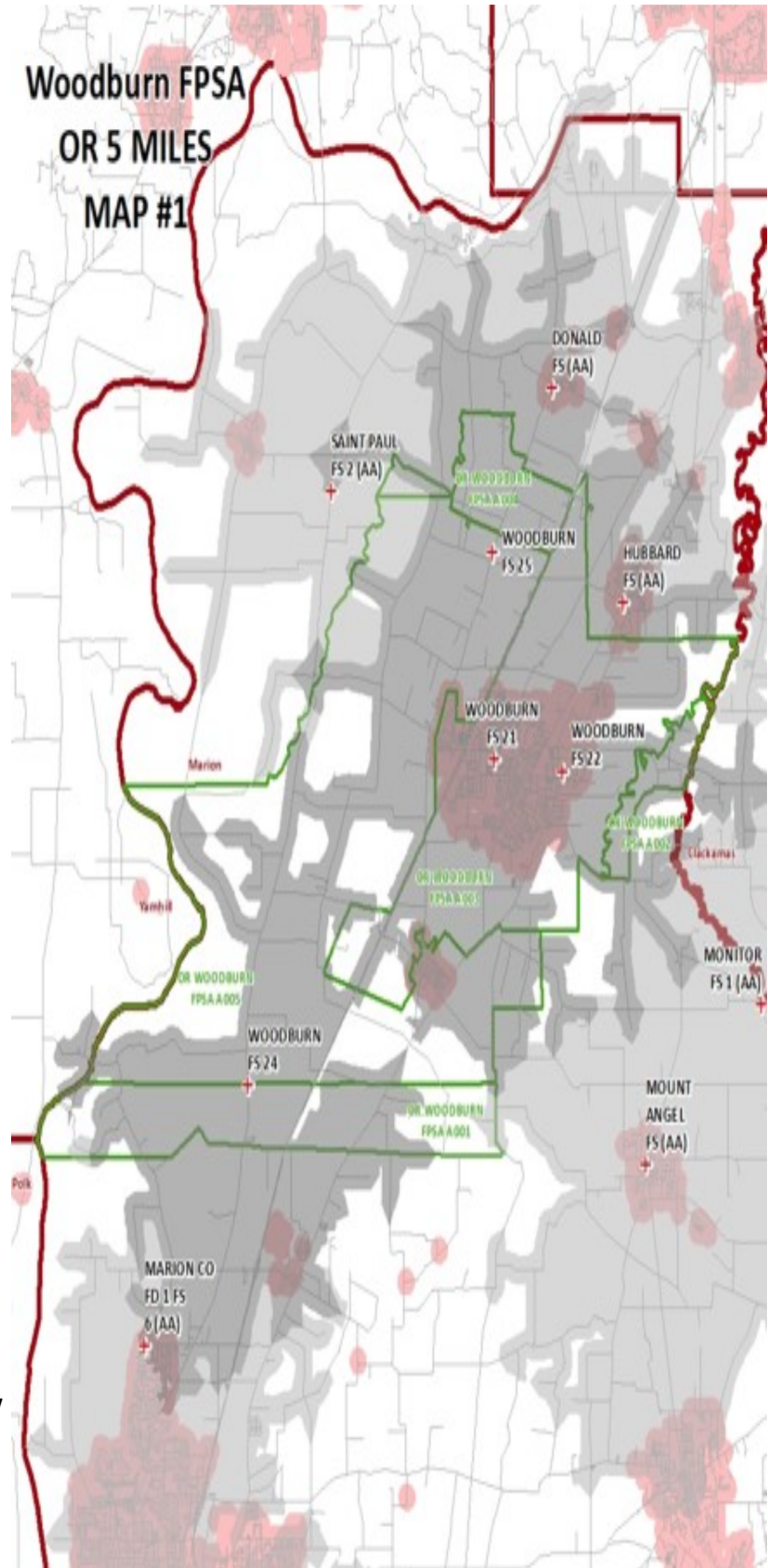
Remember:

“When disaster strikes, the time to prepare has passed.” - Steven Cyros

Insurance Service Organization (ISO) Fire District Rating Improvement 2024

This map is used by the Insurance Services Office (ISO) to show a 5-mile driving distance from existing fire stations. The goal is to have all dark gray areas indicating those areas within 5 miles driving distance. The white area around the city of Gervais indicates a low response area. Property insurance companies use the ISO maps and ratings to establish insurance premiums for property owners.

ISO also rates all 27,181 fire agencies in the US on a 1-10 scale with one being the best. Woodburn Fire currently has an ISO rating code of "3". There are many factors that go into the rating calculation including area coverage within 5 miles, access to a training center, fire district training documents and more. With the addition of the new Gervais station, more than 90 percent of the district will be within 5 miles of a fire station and the ISO rating is expected to improve to a "2". This is expected to save property owners about 5% in insurance premiums which equates to \$20 per year on a \$400 policy. While this is a modest savings, it does represent about 50% of the tax levied for a home at the average assessed value by the 2021 bond that will partially finance the new station. For a home in Gervais that is based on \$170,500 the annual bond levy equals \$44.23 per year.



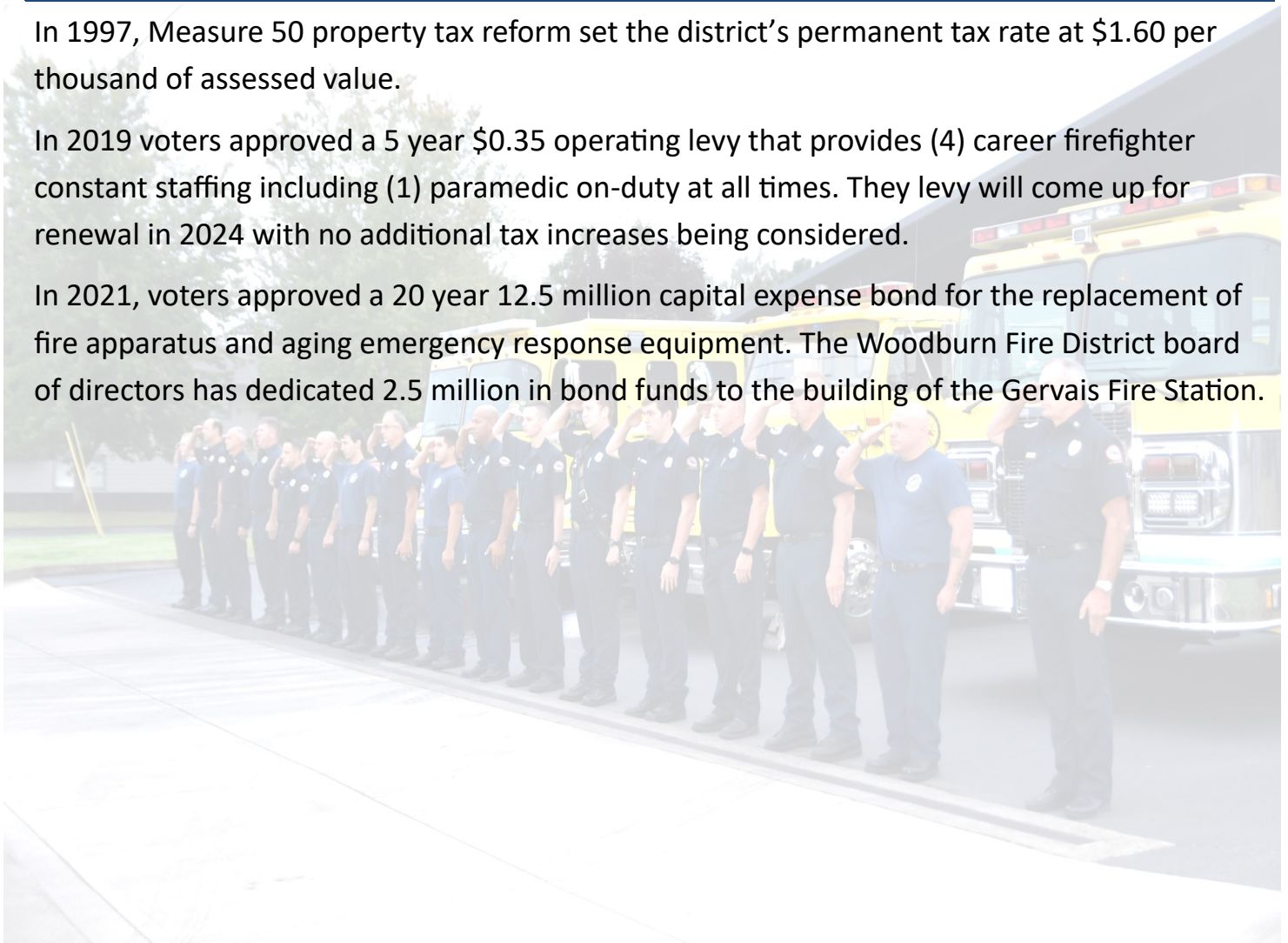
Fire District Tax Comparisons

	HUBBARD	WOODBURN	AURORA	CANBY
Base Tax Rate	0.80	1.60	0.84	1.54
Capital Bond	0.27	0.26	0.00	0.22
Operations Levy	<u>0.99</u>	<u>0.35</u>	<u>0.99</u>	<u>0.45</u>
Total Tax Rate - Per 1,000/AV:	\$2.06	\$2.14	\$1.83	\$2.21

In 1997, Measure 50 property tax reform set the district’s permanent tax rate at \$1.60 per thousand of assessed value.

In 2019 voters approved a 5 year \$0.35 operating levy that provides (4) career firefighter constant staffing including (1) paramedic on-duty at all times. The levy will come up for renewal in 2024 with no additional tax increases being considered.

In 2021, voters approved a 20 year 12.5 million capital expense bond for the replacement of fire apparatus and aging emergency response equipment. The Woodburn Fire District board of directors has dedicated 2.5 million in bond funds to the building of the Gervais Fire Station.





Current Tax Burden

Due to the current tax burden with the district's property tax being at the top of all 20 cities in Marion county, the Woodburn Fire District is not proposing any additional taxes. Additionally, many properties within the district's boundaries are in tax compression resulting from the Measure 5 tax limitation that was approved by Oregon State voters in 1990. Additional taxes imposed on properties that are already at the maximum tax rate results in a reduction to other government services including the City of Woodburn. Most properties in the city of Gervais are not currently at the maximum tax cap.

2022-23 Rates in Descending Order of Tax Rate

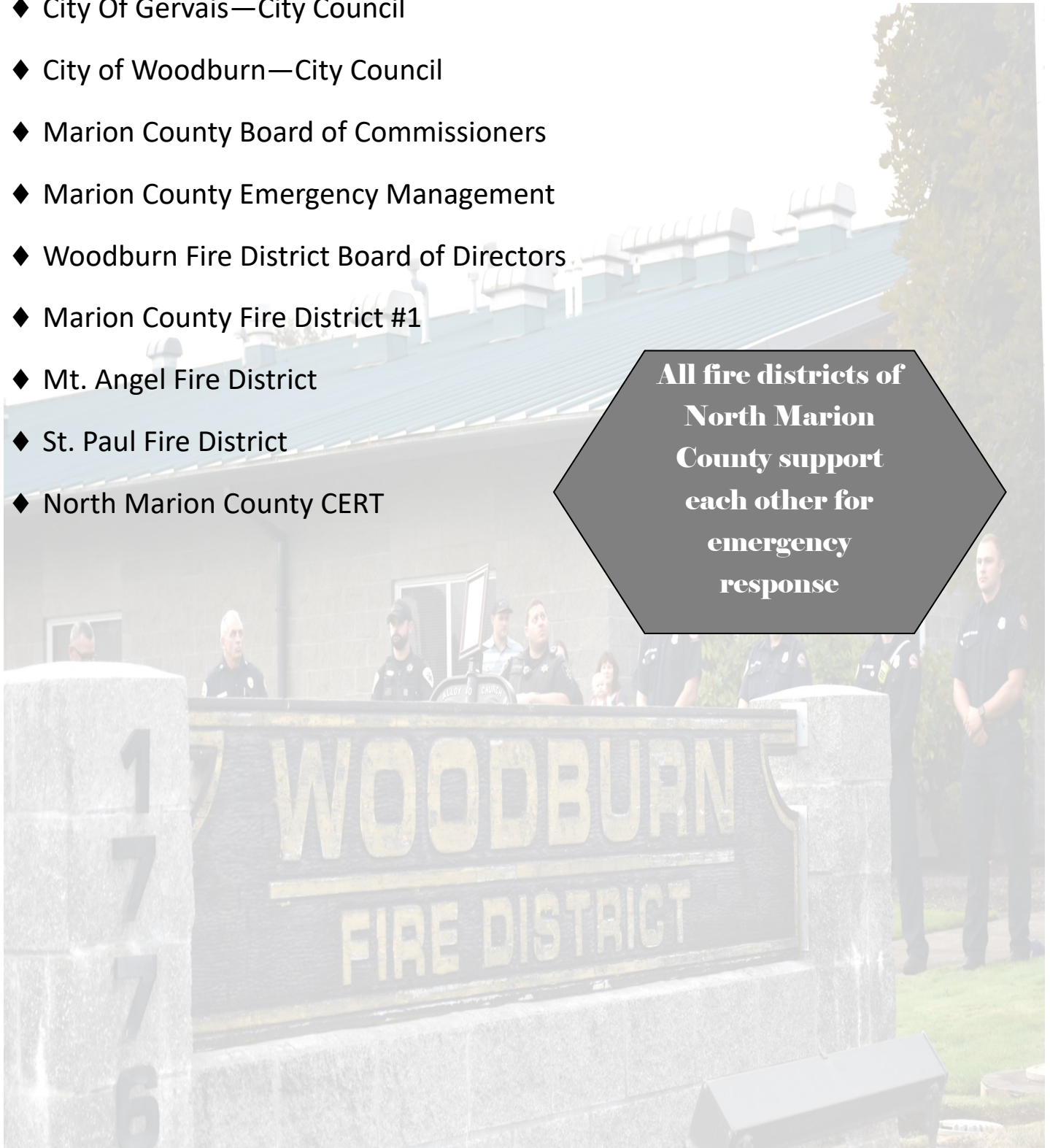
PROP.ID	City	Tax Code Area	Composite Rate	Assessed Value	Tax
328397	WOODBURN	03030	19.9010	186,720	\$ 3,715.92
107377	WOODBURN	03039	19.8510	157,590	\$ 3,128.32
341235	SALEM	24010	19.6499	240,420	\$ 4,724.24
599266	GERVAIS	01100	19.2282	170,150	\$ 3,271.68
322027	MT ANGEL	91150	17.3112	195,060	\$ 3,376.71
100836	MILL CITY	56140	17.1926	145,960	\$ 2,509.44
101989	SILVERTON	04020	16.7195	247,400	\$ 4,136.41
551855	KEIZER	24200	16.5846	193,320	\$ 3,276.52
333214	AURORA	15069	16.3334	285,100	\$ 4,656.64
100016	IDANHA	56120	16.2721	39,470	\$ 642.24
534627	STAYTON	29040	16.2404	202,810	\$ 3,293.72
597279	AUMSVILLE	05050	15.5341	168,370	\$ 2,615.48
341721	TURNER	05190	15.5059	241,390	\$ 3,742.97
599984	HUBBARD	15110	15.3517	200,710	\$ 3,081.25
542293	DETROIT	56070	14.9213	141,630	\$ 2,113.30
537201	JEFFERSON	14130	14.6510	151,980	\$ 2,226.66
103147	SAINT PAUL	45160	14.6022	247,030	\$ 3,607.20
598839	GATES	56090	14.0124	137,130	\$ 1,921.54
101302	SCOTTS MILLS	04170	13.2069	157,510	\$ 2,080.22
320494	SUBLIMITY	29180	12.6151	269,470	\$ 3,399.38
356393	DONALD	15080	12.2594	200,910	\$ 2,108.86

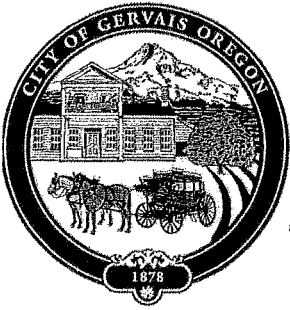
Local Emergency Response & Regional Preparedness

Letters of Support

- ◆ City Of Gervais—City Council
- ◆ City of Woodburn—City Council
- ◆ Marion County Board of Commissioners
- ◆ Marion County Emergency Management
- ◆ Woodburn Fire District Board of Directors
- ◆ Marion County Fire District #1
- ◆ Mt. Angel Fire District
- ◆ St. Paul Fire District
- ◆ North Marion County CERT

**All fire districts of
North Marion
County support
each other for
emergency
response**





CITY OF GERVAIS

592 Fourth Street/PO Box 329, Gervais, Oregon 97026-0329
503-792-4900 Administration Office; 503-792-3791 Fax
Text Tel. (TTY) 1-800-735-2900 Spanish (TTY/V) 1-800-735-3896

February 3, 2023

State Legislators,

Please consider funding the capital project request for the construction of a new fire station and regional emergency preparedness facility on Butteville Road near Gervais. This project will improve emergency response for the Gervais community, help meet the regional needs for large scale disaster preparedness and response and proactively prepare for the rapid population growth occurring in the Gervais area.

The Gervais community is currently underserved for emergency response to fire and medical emergencies. The establishment of the new fire station will improve response times from the current ten (10) minutes to less than five (5) minutes, which will allow compliance with national standards and improve life safety for residents of the Gervais area.

The requested funding will also provide a facility that will strengthen regional disaster preparedness and response to large scale emergencies and provide additional benefits for the Gervais community and surrounding region. Some of these benefits include:

- Regional Fire / Disaster Preparedness Training Center – North Marion County
- Woodburn/Gervais CERT Program Administrative Office Space
- Student Firefighter Resident Volunteer Program Support for Area Youth
- Regional Emergency Fuel Storage & Distribution Facility
- Regional OEM SPIRE Grant Funded Portable Water Distribution Trailer Staging & Support
- Gervais Community Meeting Room

The current population of Gervais is approximately 2,713. According to information provided to the City of Gervais by Portland State University, the population is expected to double over the next 20 years. The project will position the Woodburn Fire District to meet the emergency response needs of the growing community for decades to come.

Thank you for considering the City's support of the new Gervais Fire Station funding request.

On Behalf of the Gervais City Council,

Annie Gilland, Mayor

A handwritten signature in black ink that reads 'Annie Gilland Mayor'. The signature is written in a cursive, flowing style.

The City of Gervais is an Equal Opportunity Provider and Employer. Complaints of discrimination should be sent to: USDA, Director, Office of Civil Rights, Washington, DC 20250-9410



January 23, 2023

Re: Letter of Support for New Gervais Fire Station & Regional Emergency Preparedness Facility

Please consider funding the capital project request for the construction of a new fire station and regional emergency preparedness facility. This project will proactively prepare for the rapid population growth occurring in the south and west areas of the city of Woodburn and help meet the regional needs for large scale disaster preparedness and response.

The new fire station site at Butteville and Jensen Roads is well positioned to serve the emergency response needs of the rapidly expanding areas of the city of Woodburn. With more than 3,300 new housing units under development, the current fire district population of 39,000 residents is expected to increase by 20% over the next 5-10 years. The project will position the Woodburn Fire District to meet the emergency response needs of the growing city for decades to come.

The requested funding will also provide a facility that will strengthen regional disaster preparedness and response to large scale emergencies and provide additional benefits for the region; some of these benefits include:

- Regional Fire / Disaster Preparedness Training Center – North Marion County
- Woodburn/Gervais CERT Program Administrative Office Space
- Student Firefighter Resident Volunteer Program Support for Area Youth
- Regional Emergency Fuel Storage & Distribution Facility
- Regional OEM SPIRE Grant Funded Portable Water Distribution Trailer Staging & Support

Thank you for considering your support of the new fire station funding request.

Sincerely,

Frank Lonergan, Mayor
City of Woodburn



Marion County
OREGON

Board of Commissioners

January 3, 2023

(503) 588-5212
(503) 588-5237-FAX

RE: Gervais Fire Station Capital Project Funding Request

**BOARD OF
COMMISSIONERS**

Colm Willis, Chair
Kevin Cameron
Danielle Bethell

Dear Oregon State Legislature,

The Marion County Board of Commissioners supports the Woodburn Fire District's request for capital funding for the Gervais fire station. This capital project will improve emergency response to an underserved community in Marion County, help meet the regional needs for large-scale disaster preparedness and response and proactively prepare for the rapid population growth occurring in the North Willamette Valley region.

**CHIEF
ADMINISTRATIVE
OFFICER**

Jan Fritz

Funding the capital project will provide a facility that will strengthen regional disaster preparedness and response to emergencies. It will also support a student firefighter volunteer program, emergency fuel storage and distribution, and house a portable water distribution trailer. Having a fire station in Gervais will also improve response times from the current (10) minutes to less than (5) minutes.

Additionally, the new fire station site is well-positioned to serve the emergency response needs of a rapidly expanding area of Marion County. With more than 3,300 new housing units currently under development, the fire district's population of 40,000 residents is projected to increase by 20% over the next 5-10 years. Approving the funding request will position the local fire district to meet the emergency response needs of the growing region for decades to come.

Thank you for considering supporting the Gervais Fire Station funding request.

Sincerely,

Colm Willis, Chair

Kevin Cameron

Danielle Bethell

BOC: JLS



Marion County **OREGON**

PUBLIC WORKS

(503) 588-5036

BOARD OF COMMISSIONERS

Danielle Bethell
Colm Willis
Kevin Cameron

DIRECTOR

Brian Nicholas, PE

ADMINISTRATION

BUILDING INSPECTION

EMERGENCY MANAGEMENT

ENGINEERING

ENVIRONMENTAL SERVICES

OPERATIONS

PARKS

PLANNING

SURVEY

State Legislatures,

Please consider funding the capital project request for the construction of a new fire station and regional emergency preparedness facility on Butteville Road near Gervais. This project will improve emergency response for the Gervais community, help meet the regional needs for large scale disaster preparedness and response and proactively prepare for the rapid population growth occurring in the Gervais area.

The Gervais community is currently underserved for emergency response to fire and medical emergencies. The establishment of the new fire station will improve response times from the current (10) minutes to less than (5) minutes which will allow compliance with national standards and improve life safety for residents of the Gervais area. The current population of Gervais is approximately 2,713. According to information provided to the City of Gervais by Portland State University, the population is expected to double over the next 20 years.


In addition to the improvement in emergency response, the requested funding will also provide a facility that will strengthen regional disaster preparedness and response to large scale emergencies and provide additional benefits for the Gervais community and surrounding region. Some of these benefits include:

- Regional Fire / Disaster Preparedness Training Center – North Marion County
- Woodburn/Gervais CERT Program Administrative Office Space
- Student Firefighter Resident Volunteer Program Support for Area Youth
- Regional Emergency Fuel Storage & Distribution Facility
- Regional OEM SPIRE Grant Funded Portable Water Distribution Trailer Staging & Support
- Gervais Community Meeting Room / CERT Training Room

The project will position the Woodburn Fire District to meet the emergency response needs of the growing community and strengthen the region's preparedness for a large-scale disaster.

Thank you for considering your support of for the new Gervais Fire Station funding request.

Sincerely,


Gregory J. Walsh, CEM
Director of Emergency Management

GW



1776 Newberg Hwy
Woodburn, OR 97071
Phone: 503-982-2360
Fax: 503-981-5004

February 24, 2023

Jerry Cotter
Board President
Woodburn Fire District Board of Directors

Capital Funding Committee
Oregon State Legislature

RE: Matching Fund Allocation - Gervais Fire Station & Regional Emergency Preparedness Facility

The Woodburn Fire District Board of Directors has allocated \$2,529,811 of district bond funds for the construction of the Gervais Fire Station & Regional Disaster Preparedness Facility. The bond revenue has been collected and is ready for disbursement.

The bond allocation is in support of the fire district's capital funding request that will improve response times for fire protection and medical emergencies to a community that is currently underserved. The current response times from the district's existing fire stations are (10) minutes or more. This is more than double the response time standard established by the National Fire Protection Association (NFPA); the universally recognized industry expert for fire service standards. The new Gervais fire station will allow compliance with national standard and improve life safety for residents of the Gervais area.

The requested funding will also provide a facility that will strengthen regional disaster preparedness and response to large scale emergencies and provide additional benefits for the Gervais community and surrounding region.

In 2021, fire district voters approved a bond levy that will fund 33% of the total project costs. The fire district has since acquired five acres of land just north of Gervais and the site has been approved by Marion County for the construction of the station.

Thank you for considering support of the Gervais Fire Station project that will improve life safety for the Gervais community, help meet the regional needs for large scale disaster response and preparedness, and proactively prepare for the rapid population growth occurring in the region.

Sincerely,

Jerry Cotter, President
Woodburn Fire District Board of Directors

BOARD OF DIRECTORS

Mike Bauer
Sue Curths
Jeff Hart
Jon Stueve
Mike Welter



FOUR CORNERS STATION
MIDDLE GROVE STATION
PRATUM STATION
MACLEAY STATION
BROOKS STATION
CLEAR LAKE STATION
LABISH CENTER STATION
CHEMEKETA STATION

CHIEF OF DISTRICT
Kyle McMann

Oregon State Legislature Members,

I encourage you to please consider funding the capital project request for the construction of a new fire station and regional emergency preparedness facility in the Gervais Community. A new fire station in this location will help meet the fire protection and emergency medical response needs for the nearly 100,000 residents of the north Marion County region.

Marion County Fire District No. 1 shares a long northern common border with the Woodburn Fire District. Emergency response resources are frequently shared between the two fire districts under existing mutual-aid agreements. The presence of additional fire protection apparatus in Gervais will improve the public safety for the entire area.

In the event of a major regional disaster, the emergency preparedness components of this request will provide a back-up source of fuel for fire apparatus, public works equipment and emergency generators that will allow essential public services to continue to operate until infrastructures are restored.

Additionally, this facility will allow the distribution of potable water to area residents using a SPIRE grant funded water trailer that will be stored at this location and made available to meet the potable water for all in need in the region in the event of a major event that disrupts water supply systems.

Thank you for considering funding for this project will help meet the fire protection, emergency response and emergency preparedness needs for the communities we serve for decades to come.

Sincerely,

A handwritten signature in black ink that reads "Kyle G McMann".

Kyle G McMann
Fire Chief
Marion County Fire District No. 1



MT. ANGEL FIRE DISTRICT

P.O. Box 335 • 300 Monroe St. • Mt. Angel, Oregon 97362
(503) 845-2438 • Fax (503) 845-2855

Emergency & Fire 9-1-1

State Legislatures,

Please consider funding the capital project request for the construction of a new fire station and regional emergency preparedness facility in the Gervais Community. A new fire station in this location will help meet the fire protection and emergency medical response needs for the nearly 100,000 residents of the north Marion County region.

Mt Angel Fire District shares a long common border with the Woodburn Fire District. Emergency response resources are frequently shared between the two fire districts under existing mutual-aid agreements. The presence of additional fire protection apparatus in Gervais will improve the public safety for the entire area.

In the event of a major regional disaster, the emergency preparedness components of this request will provide a back-up source of fuel for fire apparatus, public works equipment and emergency generators that will allow essential public services to continue to operate until infrastructures are restored.

Additionally, this facility will allow the distribution of potable water to area residents using a SPIRE grant funded water trailer that will be stored at this location and made available to meet the potable water for all in need in the region in the event of a major event that disrupts water supply systems.

Thank you for considering funding for this project will help meet the fire protection, emergency response and emergency preparedness needs for the communities we serve for decades to come.

Sincerely,



Jim Trierweiler
Fire Chief

Mt Angel Fire District

2-14-2023



St. Paul Fire Protection District

P.O. Box 144 • St. Paul, Oregon 97137 • (503) 633-4602 • Fax (503) 633-4601

Dear Honorable Members of the 2023 Oregon State Legislature,

Please consider funding the capital project request to construct a new fire station and regional emergency preparedness facility in the Gervais Community. A new fire station in this location will help meet the fire protection and emergency medical response needs of the nearly 100,000 residents of the north Marion County region.

St. Paul Rural Fire Protection District shares a long common border with the Woodburn Fire District. The two fire districts frequently share emergency response resources under existing mutual-aid agreements. The presence of additional fire protection apparatus in Gervais will improve public safety for the entire area.

In the event of a significant regional disaster, the emergency preparedness components of this request will provide a backup fuel source for fire apparatus, public works equipment, and emergency generators that will allow essential public services to continue operating until infrastructure repairs are completed.

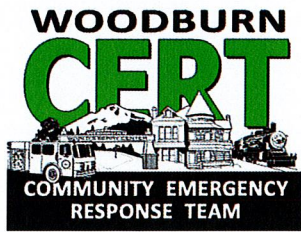
Additionally, this facility will allow the distribution of potable water to area residents using a SPIRE grant-funded water trailer that will be stored at this location and made available to meet the potable water for all in need in the region event of a significant event that disrupts water supply systems.

Thank you for considering funding for this project will help meet the fire protection, emergency response, and emergency preparedness needs of the communities we serve for decades to come. Please feel free to contact me directly if you would like to discuss this project further.

Sincerely,

Chief Bryan G. Lee

St. Paul Rural Fire Protection District



February 22, 2023

Capital Project Committee
Oregon State Legislature

RE: Gervais Fire Station & Regional Emergency Preparedness Facility

The Woodburn Community Emergency Response Team (CERT) asks for your support for the construction of the Gervais Fire Station and Regional Emergency Preparedness Facility in Gervais. This project will help meet the regional needs for large scale disaster preparedness and response that will save lives in the aftermath of a regional natural disaster.

Woodburn CERT is an organization of 50 dedicated volunteers sponsored by the Woodburn Fire District. The CERT mission is to provide the residents of the north Marion County and south Clackamas County region with first-aid, food & water distribution, shelter, and general assistance in the event of a natural disaster. The presence of CERT in the community neighborhoods to address these needs will free first responders to address the critical emergency needs of the event.

The main event that the volunteers are preparing for is the large magnitude Cascadia Subduction Zone earthquake that is expected to strike the region with devastating impacts to community housing and critical infrastructures. The training and preparation for this event allowed CERT to meet the community needs during the 2020 Santiam Canyon Wildfires, the 2021 ice storm and the COVID pandemic.

The requested funding will strengthen the regional disaster preparedness and response and provide benefits for the Gervais community and surrounding region in the following ways:

- Regional Fire / Disaster Preparedness Training Center – *For North Marion County*
- Gervais Community Meeting Room & Emergency Evacuation Center
- Woodburn/Gervais CERT Program Administrative Office Space
- Student Firefighter Resident Program - *Fire Service Career Assistance for Area Youth*
- Regional Emergency Fuel Storage & Distribution Facility
- Regional OEM SPIRE Grant Funded Portable Water Distribution Trailer Staging & Support

Thank you for considering support for the new Gervais Fire Station funding request.

Sincerely,

Ulrich M. Reich
C.E.R.T. Coordinator
Woodburn Fire District
uli.reich@woodburnfire.com

We are help until help arrives!

Woodburn C.E.R.T.

1776 Newberg Hwy.

Woodburn, OR 97071

503-982-2360

CERT@WoodburnFire.com

WOODBURN FIRE DEPARTMENT STATION 23 - OPTION # 2

BID DATE: January 30th, 2023

ESTIMATE NUMBER:	22093

BASE BID PACKAGE		Sheet Link	ECCO TOTALS		
SPEC	ESTIMATE DESCRIPTION		ECCO HOURS	SECTION TOTALS	
010000	General Requirements	▶		\$ 525,000	8.35%
030000	Concrete	1	0.00	\$ 166,656	
040000	Masonry	2	0.00	\$ 72,813	
050000	Metals	3	0.00	\$ 20,801	
060000	Wood, Plastics, and Composites	4	1,461.29	\$ 346,061	
070000	Thermal and Moisture Protection	5	0.00	\$ 208,726	
080000	Openings	6	0.00	\$ 171,108	
090000	Finishes	7	0.00	\$ 252,461	
100000	Specialties	8	0.00	\$ 35,405	
110000	Equipment	9	0.00	\$ 27,095	
120000	Furnishings	10	0.00	\$ 6,754	
210000	Fire Suppression	11	0.00	\$ 89,977	
220000	Plumbing	12	0.00	\$ 133,271	
230000	Heating, Ventilating, and Air-Conditioning (HVAC)	13	0.00	\$ 283,691	
260000	Electrical	14	0.00	\$ 426,809	
310000	Earthwork	15	0.00	\$ 359,588	
320000	Exterior Improvements	16	0.00	\$ 1,911,961	
330000	Utilities	17	0.00	\$ 604,300	
	Design / Construction Contingency (15%)	▶		\$ 846,371	
	Escalation - (Q1 - 2024) @ 5%			\$ 324,442	

TOTAL ESTIMATE	1,461	\$	6,813,288
-----------------------	--------------	-----------	------------------

Contractor's Fee	3.25%	\$	221,432
			SUB TOTAL \$ 7,034,720
Liability Insurance	0.65%	\$	45,726
			SUB TOTAL \$ 7,080,446
Builder's Risk Insurance	0.30%	\$	21,241
			SUB TOTAL \$ 7,101,687
Performance & Payment Bond	0.68%	\$	48,079
			SUB TOTAL \$ 7,149,766
Warranty Bond	0.00%	\$	-
			SUB TOTAL \$ 7,149,766
Corporate Activity Tax	0.57%	\$	40,754

TOTAL ESTIMATE	\$	7,190,520
-----------------------	-----------	------------------

	Cost of Work (COW)		GC		TOTAL COW		Soft Cost		TOTAL
Construction	\$ 2,166,626	\$	180,888	\$	2,347,514	\$	129,975	\$	2,477,489
Site Improvements	\$ 1,959,349	\$	163,583	\$	2,122,932	\$	117,541	\$	2,240,473
Equipment	\$ 102,500	\$	8,558	\$	111,058	\$	6,149	\$	117,207
Other Costs	\$ 889,000	\$	74,221	\$	963,221	\$	53,331	\$	1,016,552
Contingencies	\$ 1,170,813	\$	97,750	\$	1,268,563	\$	70,237	\$	1,338,800
	\$ 6,288,288	\$	525,000	\$	6,813,288	\$	377,232	\$	7,190,520

WOODBURN FIRE DEPARTMENT STATION 23 - OPTION # 2

BID DATE: January 30th, 2023

ESTIMATE NUMBER:	22093
ECCO RUN DATE:	01/30/23
EST. LABOR RATE:	\$ 75.00

BASE BID PACKAGE		ESTIMATE		LABOR			MATERIALS		TOTAL
SPEC	DESCRIPTION	QTY/LF	UNIT	PROD. RATE	LABOR HOURS	TOTAL	MATERIAL PRICE	MATERIAL TOTAL	TOTAL COSTS
030000	Concrete								
	Concrete								
	Continuous footings - 2' x 1'	35	cy	-	-	\$ -	\$ 625.00	\$ 21,875	\$ 21,875
	Slab-on-grade - 6" w/ reinforcing steel	5,910	sf	-	-	\$ -	\$ 15.00	\$ 88,650	\$ 88,650
	Precast concrete sill	575	lf	-	-	\$ -	\$ 45.00	\$ 25,875	\$ 25,875
	Pier Footings for Training Tower	12	ea	-	-	\$ -	\$ 2,000.00	\$ 24,000	\$ 24,000
				-	-	\$ -		\$ -	\$ -
				-	-	\$ -		\$ -	\$ -
				-	-	\$ -		\$ -	\$ -
				-	-	\$ -		\$ -	\$ -
				-	-	\$ -		\$ -	\$ -
				-	-	\$ -		\$ -	\$ -
				-	-	\$ -		\$ -	\$ -
				-	-	\$ -		\$ -	\$ -
				-	-	\$ -		\$ -	\$ -
				-	-	\$ -		\$ -	\$ -
				-	-	\$ -		\$ -	\$ -
				-	-	\$ -		\$ -	\$ -
				-	-	\$ -		\$ -	\$ -
				-	-	\$ -		\$ -	\$ -
				-	-	\$ -		\$ -	\$ -
				-	-	\$ -		\$ -	\$ -
				-	-	\$ -		\$ -	\$ -
				-	-	\$ -		\$ -	\$ -
				-	-	\$ -		\$ -	\$ -
				-	-	\$ -		\$ -	\$ -
				-	-	\$ -		\$ -	\$ -
				-	-	\$ -		\$ -	\$ -
				-	-	\$ -		\$ -	\$ -
				-	-	\$ -		\$ -	\$ -
				-	-	\$ -		\$ -	\$ -
				-	-	\$ -		\$ -	\$ -
				-	-	\$ -		\$ -	\$ -
				-	-	\$ -		\$ -	\$ -
				-	-	\$ -		\$ -	\$ -
				-	-	\$ -		\$ -	\$ -
				-	-	\$ -		\$ -	\$ -
				-	-	\$ -		\$ -	\$ -
				-	-	\$ -		\$ -	\$ -
				-	-	\$ -		\$ -	\$ -
				-	-	\$ -		\$ -	\$ -
				-	-	\$ -		\$ -	\$ -
				-	-	\$ -		\$ -	\$ -
				-	-	\$ -		\$ -	\$ -
				-	-	\$ -		\$ -	\$ -
				-	-	\$ -		\$ -	\$ -
				-	-	\$ -		\$ -	\$ -
				-	-	\$ -		\$ -	\$ -
				-	-	\$ -		\$ -	\$ -
				-	-	\$ -		\$ -	\$ -
				-	-	\$ -		\$ -	\$ -
				-	-	\$ -		\$ -	\$ -
				-	-	\$ -		\$ -	\$ -
				-	-	\$ -		\$ -	\$ -
				-	-	\$ -		\$ -	\$ -
				-	-	\$ -		\$ -	\$ -
				-	-	\$ -		\$ -	\$ -
				-	-	\$ -		\$ -	\$ -
				-	-	\$ -		\$ -	\$ -
				-	-	\$ -		\$ -	\$ -
				-	-	\$ -		\$ -	\$ -
				-	-	\$ -		\$ -	\$ -
				-	-	\$ -		\$ -	\$ -
				-	-	\$ -		\$ -	\$ -
				-	-	\$ -		\$ -	\$ -
				-	-	\$ -		\$ -	\$ -
				-	-	\$ -		\$ -	\$ -
				-	-	\$ -		\$ -	\$ -
				-	-	\$ -		\$ -	\$ -
				-	-	\$ -		\$ -	\$ -
				-	-	\$ -		\$ -	\$ -
				-	-	\$ -		\$ -	\$ -
				-	-	\$ -		\$ -	\$ -
				-	-	\$ -		\$ -	\$ -
				-	-	\$ -		\$ -	\$ -
				-	-	\$ -		\$ -	\$ -
				-	-	\$ -		\$ -	\$ -
				-	-	\$ -		\$ -	\$ -
				-	-	\$ -		\$ -	\$ -
				-	-	\$ -		\$ -	\$ -
				-	-	\$ -		\$ -	\$ -
				-	-	\$ -		\$ -	\$ -
				-	-	\$ -		\$ -	\$ -
				-	-	\$ -		\$ -	\$ -
				-	-	\$ -		\$ -	\$ -
				-	-	\$ -		\$ -	\$ -
				-	-	\$ -		\$ -	\$ -
				-	-	\$ -		\$ -	\$ -
				-	-	\$ -		\$ -	\$ -
				-	-	\$ -		\$ -	\$ -
				-	-	\$ -		\$ -	\$ -
				-	-	\$ -		\$ -	\$ -
				-	-	\$ -		\$ -	\$ -
				-	-	\$ -		\$ -	\$ -
				-	-	\$ -		\$ -	\$ -
				-	-	\$ -		\$ -	\$ -
				-	-	\$ -		\$ -	\$ -
				-	-	\$ -		\$ -	\$ -
				-	-	\$ -		\$ -	\$ -
				-	-	\$ -		\$ -	\$ -
				-	-	\$ -		\$ -	\$ -
				-	-	\$ -		\$ -	\$ -
				-	-	\$ -		\$ -	\$ -
				-	-	\$ -		\$ -	\$ -
				-	-	\$ -		\$ -	\$ -
				-	-	\$ -		\$ -	\$ -
				-	-	\$ -		\$ -	\$ -
				-	-	\$ -		\$ -	\$ -
				-	-	\$ -		\$ -	\$ -
				-	-	\$ -		\$ -	\$ -
				-	-	\$ -		\$ -	\$ -
				-	-	\$ -		\$ -	\$ -
				-	-	\$ -		\$ -	\$ -
				-	-	\$ -		\$ -	\$ -
				-	-	\$ -		\$ -	\$ -
				-	-	\$ -		\$ -	\$ -
				-	-	\$ -		\$ -	\$ -
				-	-				

WOODBURN FIRE DEPARTMENT STATION 23 - OPTION # 2

BID DATE: January 30th, 2023

ESTIMATE NUMBER:	22093
ECCO RUN DATE:	01/30/23
EST. LABOR RATE:	\$ 75.00

BASE BID PACKAGE		ESTIMATE		LABOR			MATERIALS		TOTAL
SPEC	DESCRIPTION	QTY/LF	UNIT	PROD. RATE	LABOR HOURS	TOTAL	MATERIAL PRICE	MATERIAL TOTAL	TOTAL COSTS
040000	Masonry								
	Masonry								
	- CMU standard-faced @ north wall	495	sf	-	\$	-	\$ 15.50	\$ 7,673	\$ 7,673
	- CMU split-faced lower wall	1,012	sf	-	\$	-	\$ 18.50	\$ 18,722	\$ 18,722
	- CMU ground-faced upper wall	1,899	sf	-	\$	-	\$ 23.00	\$ 43,686	\$ 43,686
				-	\$	-	\$	-	\$
				-	\$	-	\$	-	\$
				-	\$	-	\$	-	\$
				-	\$	-	\$	-	\$
				-	\$	-	\$	-	\$
				-	\$	-	\$	-	\$
				-	\$	-	\$	-	\$
				-	\$	-	\$	-	\$
				-	\$	-	\$	-	\$
				-	\$	-	\$	-	\$
				-	\$	-	\$	-	\$
				-	\$	-	\$	-	\$
				-	\$	-	\$	-	\$
				-	\$	-	\$	-	\$
				-	\$	-	\$	-	\$
				-	\$	-	\$	-	\$
				-	\$	-	\$	-	\$
				-	\$	-	\$	-	\$
				-	\$	-	\$	-	\$
				-	\$	-	\$	-	\$
				-	\$	-	\$	-	\$
				-	\$	-	\$	-	\$
				-	\$	-	\$	-	\$
				-	\$	-	\$	-	\$
				-	\$	-	\$	-	\$
				-	\$	-	\$	-	\$
				-	\$	-	\$	-	\$
				-	\$	-	\$	-	\$
				-	\$	-	\$	-	\$
				-	\$	-	\$	-	\$
				-	\$	-	\$	-	\$
				-	\$	-	\$	-	\$
				-	\$	-	\$	-	\$
				-	\$	-	\$	-	\$
				-	\$	-	\$	-	\$
				-	\$	-	\$	-	\$
				-	\$	-	\$	-	\$
				-	\$	-	\$	-	\$
				-	\$	-	\$	-	\$
				-	\$	-	\$	-	\$
				-	\$	-	\$	-	\$
				-	\$	-	\$	-	\$
				-	\$	-	\$	-	\$
				-	\$	-	\$	-	\$
				-	\$	-	\$	-	\$
				-	\$	-	\$	-	\$
				-	\$	-	\$	-	\$
				-	\$	-	\$	-	\$
				-	\$	-	\$	-	\$
				-	\$	-	\$	-	\$
				-	\$	-	\$	-	\$
				-	\$	-	\$	-	\$
				-	\$	-	\$	-	\$
				-	\$	-	\$	-	\$
				-	\$	-	\$	-	\$
				-	\$	-	\$	-	\$
				-	\$	-	\$	-	\$
				-	\$	-	\$	-	\$
				-	\$	-	\$	-	\$
				-	\$	-	\$	-	\$
				-	\$	-	\$	-	\$
				-	\$	-	\$	-	\$
				-	\$	-	\$	-	\$
				-	\$	-	\$	-	\$
				-	\$	-	\$	-	\$
				-	\$	-	\$	-	\$
				-	\$	-	\$	-	\$
				-	\$	-	\$	-	\$
				-	\$	-	\$	-	\$
				-	\$	-	\$	-	\$
				-	\$	-	\$	-	\$
				-	\$	-	\$	-	\$
				-	\$	-	\$	-	\$
				-	\$	-	\$	-	\$
				-	\$	-	\$	-	\$
				-	\$	-	\$	-	\$
				-	\$	-	\$	-	\$
				-	\$	-	\$	-	\$
				-	\$	-	\$	-	\$
				-	\$	-	\$	-	\$
				-	\$	-	\$	-	\$
				-	\$	-	\$	-	\$
				-	\$	-	\$	-	\$
				-	\$	-	\$	-	\$
				-	\$	-	\$	-	\$
				-	\$	-	\$	-	\$
				-	\$	-	\$	-	\$
				-	\$	-	\$	-	\$
				-	\$	-	\$	-	\$
				-	\$	-	\$	-	\$
				-	\$	-	\$	-	\$
				-	\$	-	\$	-	\$
				-	\$	-	\$	-	\$
				-	\$	-	\$	-	\$
				-	\$	-	\$	-	\$
				-	\$	-	\$	-	\$
				-	\$	-	\$	-	\$
				-	\$	-	\$	-	\$
				-	\$	-	\$	-	\$
				-	\$	-	\$	-	\$
				-	\$	-	\$	-	\$
				-	\$	-	\$	-	\$
				-	\$	-	\$	-	\$
				-	\$	-	\$	-	\$
				-	\$	-	\$	-	\$
				-	\$	-	\$	-	\$
				-	\$	-	\$	-	\$
				-	\$	-	\$	-	\$
				-	\$	-	\$		

WOODBURN FIRE DEPARTMENT STATION 23 - OPTION # 2

BID DATE: January 30th, 2023

ESTIMATE NUMBER:	22093
ECCO RUN DATE:	01/30/23
EST. LABOR RATE:	\$ 75.00

BASE BID PACKAGE		ESTIMATE		LABOR			MATERIALS		TOTAL
SPEC	DESCRIPTION	QTY/LF	UNIT	PROD. RATE	LABOR HOURS	TOTAL	MATERIAL PRICE	MATERIAL TOTAL	TOTAL COSTS
050000	Metals								
	Metals								
	- Entry canopies - 12' x 4' - 2 ea	96	sf	-	-	\$ -	\$ 95.00	\$ 9,120	\$ 9,120
	- Ladder to mezzanine	1	ea	-	-	\$ -	\$ 2,500.00	\$ 2,500	\$ 2,500
	- Pipe railings @ mezzanine	48	lf	-	-	\$ -	\$ 175.00	\$ 8,400	\$ 8,400
				-	-	\$ -	\$ -	\$ -	\$ -
				-	-	\$ -	\$ -	\$ -	\$ -
				-	-	\$ -	\$ -	\$ -	\$ -
				-	-	\$ -	\$ -	\$ -	\$ -
				-	-	\$ -	\$ -	\$ -	\$ -
				-	-	\$ -	\$ -	\$ -	\$ -
				-	-	\$ -	\$ -	\$ -	\$ -
				-	-	\$ -	\$ -	\$ -	\$ -
				-	-	\$ -	\$ -	\$ -	\$ -
				-	-	\$ -	\$ -	\$ -	\$ -
	Small tools & equipment	0	hrs	-	-	\$ -	\$ 8.05	\$ -	\$ -
Total Metals					0.0	\$ -	\$ -	\$ 20,020	\$ 20,020

WOODBURN FIRE DEPARTMENT STATION 23 - OPTION # 2

BID DATE: January 30th, 2023

ESTIMATE NUMBER:	22093
ECCO RUN DATE:	01/30/23
EST. LABOR RATE:	\$ 75.00

BASE BID PACKAGE		ESTIMATE		LABOR			MATERIALS		TOTAL
SPEC	DESCRIPTION	QTY/LF	UNIT	PROD. RATE	LABOR HOURS	TOTAL	MATERIAL PRICE	MATERIAL TOTAL	TOTAL COSTS
060000 Wood, Plastics, and Composites									
Wood, Plastics, and Composites									
	- Ext. wood stud wall framing - 2 x 4 - 400 lf (~16'h)	6,164	bm	0.08	493	\$ 36,984	\$ 2.00	\$ 12,328	\$ 49,312
	- Int. wood stud wall framing - 2 x 6 - 500 lf (~16'h)	11,500	bm	0.08	920	\$ 69,000	\$ 2.00	\$ 23,000	\$ 92,000
	- Mezzanine joist framing	563	bm	0.06	34	\$ 2,533	\$ 1.75	\$ 985	\$ 3,518
	- Mezzanine floor plywood	360	sf	0.04	14	\$ 1,080	\$ 1.80	\$ 648	\$ 1,728
	- Roof framing	5,910	bm	0.00	-	\$ -	\$ 20.00	\$ 118,200	\$ 118,200
	- Casework	120	lf	0.00	-	\$ -	\$ 450.00	\$ 54,000	\$ 54,000
	- FRP/wainscoat in weight room	170	sf	0.00	-	\$ -	\$ 15.00	\$ 2,550	\$ 2,550
	Small tools & equipment	1,461	hrs			\$ -	\$ 8.05	\$ 11,763	\$ 11,763
Total Wood, Plastics, and Composites					1461.3	\$ 109,597	\$ 223,474	\$ 333,071	

WOODBURN FIRE DEPARTMENT STATION 23 - OPTION # 2

BID DATE: January 30th, 2023

ESTIMATE NUMBER:	22093
ECCO RUN DATE:	01/30/23
EST. LABOR RATE:	\$ 75.00

BASE BID PACKAGE		ESTIMATE		LABOR			MATERIALS		TOTAL
SPEC	DESCRIPTION	QTY/L	UNIT	PROD. RATE	LABOR HOURS	TOTAL	MATERIAL PRICE	MATERIAL TOTAL	TOTAL COSTS
070000 Thermal and Moisture Protection									
Thermal and Moisture Protection									
	Waterproofing	1,200	sf	-	-	-	\$ 3.25	\$ 3,900	\$ 3,900
	Below grade rigid insulation	1,200	sf	-	-	-	\$ 2.75	\$ 3,300	\$ 3,300
	Joint sealants	5,910	sf	-	-	-	\$ 2.25	\$ 13,298	\$ 13,298
	Flush metal panel siding w/ wrb & rigid insulation	1,031	sf	-	-	-	\$ 70.00	\$ 72,170	\$ 72,170
	Standing seam metal roofing w/rigid insulation	5,910	sf	-	-	-	\$ 12.00	\$ 70,920	\$ 70,920
	Sheet metal flashing & trim	5,910	sf	-	-	-	\$ 2.00	\$ 11,820	\$ 11,820
	Exterior wall insulation - R13	3,840	sf	-	-	-	\$ 2.25	\$ 8,640	\$ 8,640
	Roof insulation - R19	5,910	sf	-	-	-	\$ 2.85	\$ 16,844	\$ 16,844
				-	-	-	\$	-	\$
				-	-	-	\$	-	\$
				-	-	-	\$	-	\$
				-	-	-	\$	-	\$
				-	-	-	\$	-	\$
				-	-	-	\$	-	\$
				-	-	-	\$	-	\$
				-	-	-	\$	-	\$
				-	-	-	\$	-	\$
				-	-	-	\$	-	\$
				-	-	-	\$	-	\$
				-	-	-	\$	-	\$
	Small tools & equipment	0	hrs	-	-	-	\$ 8.05	\$ -	\$ -
Total Thermal and Moisture Protection				0.0	\$ -	\$ -	\$ 200,891	\$ 200,891	\$ 200,891

WOODBURN FIRE DEPARTMENT STATION 23 - OPTION # 2

BID DATE: January 30th, 2023

ESTIMATE NUMBER:	22093
ECCO RUN DATE:	01/30/23
EST. LABOR RATE:	\$ 75.00

BASE BID PACKAGE		ESTIMATE		LABOR			MATERIALS		TOTAL
SPEC	DESCRIPTION	QTY/LF	UNIT	PROD. RATE	LABOR HOURS	TOTAL	MATERIAL PRICE	MATERIAL TOTAL	TOTAL COSTS
090000	Finishes								
	Finishes								
	Interior walls - Drywall	13,152	sf	-	-	-	\$ 6.50	\$ 85,488	\$ 85,488
	Exterior walls - Drywall	4,832	sf	-	-	-	\$ 5.50	\$ 26,576	\$ 26,576
	Ceilings - Drywall	360	sf	-	-	-	\$ 9.25	\$ 3,330	\$ 3,330
	Ceilings - Acoustical tile	5,541	sf	-	-	-	\$ 4.75	\$ 26,320	\$ 26,320
	Tile	349	sf	-	-	-	\$ 24.50	\$ 8,551	\$ 8,551
	Carpet	1,416	sf	-	-	-	\$ 8.00	\$ 11,328	\$ 11,328
	Walk off Mat	300	sf	-	-	-	\$ 19.50	\$ 5,850	\$ 5,850
	Polished Concrete	2,882	sf	-	-	-	\$ 6.75	\$ 19,454	\$ 19,454
	Resilient Flooring	985	sf	-	-	-	\$ 5.50	\$ 5,418	\$ 5,418
	Painting	18,344	sf	-	-	-	\$ 2.05	\$ 37,605	\$ 37,605
	- Doors & Frames Painting	26	ea	-	-	-	\$ 175.00	\$ 4,550	\$ 4,550
	- Water repellant / anti-graffiti @ CMU	3,406	sf	-	-	-	\$ 2.50	\$ 8,516	\$ 8,516
				-	-	-	-	-	-
				-	-	-	-	-	-
	Small tools & equipment	0	hrs	-	-	-	\$ 8.05	-	-
Total Finishes					0.0	\$ -	\$ 242,984	\$ 242,984	

WOODBURN FIRE DEPARTMENT STATION 23 - OPTION # 2

BID DATE: January 30th, 2023

ESTIMATE NUMBER:	22093
ECCO RUN DATE:	01/30/23
EST. LABOR RATE:	\$ 75.00

BASE BID PACKAGE		ESTIMATE		LABOR			MATERIALS		TOTAL
SPEC	DESCRIPTION	QTY/L	UNIT	PROD. RATE	LABOR HOURS	TOTAL	MATERIAL PRICE	MATERIAL TOTAL	TOTAL COSTS
100000 Specialties									
Specialties									
	Visual Display Surfaces	1	LS	-	\$ -	\$ -	\$ 1,500.00	\$ 1,500	\$ 1,500
	Wall & Corner Protection	1	LS	-	\$ -	\$ -	\$ 750.00	\$ 750	\$ 750
	Toilet Paper Dispenser	5	EA	-	\$ -	\$ -	\$ 65.00	\$ 325	\$ 325
	Soap Dispenser	6	EA	-	\$ -	\$ -	\$ 45.00	\$ 270	\$ 270
	Lockers @ Turnout - Geargrid	32	EA	-	\$ -	\$ -	\$ 750.00	\$ 24,000	\$ 24,000
	Paper Towel Dispenser	6	EA	-	\$ -	\$ -	\$ 85.00	\$ 510	\$ 510
	42" Grab Bar	5	EA	-	\$ -	\$ -	\$ 145.00	\$ 725	\$ 725
	36" Grab Bar	5	EA	-	\$ -	\$ -	\$ 145.00	\$ 725	\$ 725
	42"x30"Mirror	6	EA	-	\$ -	\$ -	\$ 200.00	\$ 1,200	\$ 1,200
	Sanitary Napkin Disposal	5	EA	-	\$ -	\$ -	\$ 30.00	\$ 150	\$ 150
	Building signage	1	LS	-	\$ -	\$ -	\$ 3,750.00	\$ 3,750	\$ 3,750
	FEC	4	EA	-	\$ -	\$ -	\$ 375.00	\$ 1,500	\$ 1,500
				-	\$ -	\$ -	\$ -	\$ -	\$ -
				-	\$ -	\$ -	\$ -	\$ -	\$ -
	Small tools & equipment	0	hrs				\$ 8.05	\$ -	\$ -
Total Specialties					0.0	\$ -	\$ 35,405	\$ 35,405	\$ 35,405

WOODBURN FIRE DEPARTMENT STATION 23 - OPTION # 2

BID DATE: January 30th, 2023

ESTIMATE NUMBER:	22093
ECCO RUN DATE:	01/30/23
EST. LABOR RATE:	\$ 75.00

BASE BID PACKAGE		ESTIMATE		LABOR			MATERIALS		TOTAL
SPEC	DESCRIPTION	QTY/L	UNIT	PROD. RATE	LABOR HOURS	TOTAL	MATERIAL PRICE	MATERIAL TOTAL	TOTAL COSTS
110000	Equipment								
	Equipment								
	Fume hood	1	EA	-	-	\$ 895.00	\$ 895	\$ 895	\$ 895
	Stackable Washer and Dryer	1	EA	-	-	\$ 3,000.00	\$ 3,000	\$ 3,000	\$ 3,000
	Washer	1	EA	-	-	\$ 1,500.00	\$ 1,500	\$ 1,500	\$ 1,500
	Dryer	1	EA	-	-	\$ 1,500.00	\$ 1,500	\$ 1,500	\$ 1,500
	Dishwasher	1	EA	-	-	\$ 1,200.00	\$ 1,200	\$ 1,200	\$ 1,200
	Microwave	1	EA	-	-	\$ 500.00	\$ 500	\$ 500	\$ 500
	Refrigerator	4	EA	-	-	\$ 2,500.00	\$ 10,000	\$ 10,000	\$ 10,000
	Freezers	4	EA	-	-	\$ 1,500.00	\$ 6,000	\$ 6,000	\$ 6,000
	Oven / range	1	EA	-	-	\$ 2,500.00	\$ 2,500	\$ 2,500	\$ 2,500
				-	-	\$ -	\$ -	\$ -	\$ -
	Small tools & equipment	0	hrs	-	-	\$ 8.05	\$ -	\$ -	\$ -
Total Equipment					0.0	\$ -	\$ 27,095	\$ 27,095	\$ 27,095

WOODBURN FIRE DEPARTMENT STATION 23 - OPTION # 2

BID DATE: January 30th, 2023

ESTIMATE NUMBER:	22093
ECCO RUN DATE:	01/30/23
EST. LABOR RATE:	\$ 75.00

BASE BID PACKAGE		ESTIMATE		LABOR			MATERIALS		TOTAL
SPEC	DESCRIPTION	QTY/LF	UNIT	PROD. RATE	LABOR HOURS	TOTAL	MATERIAL PRICE	MATERIAL TOTAL	TOTAL COSTS
120000	Furnishings								
	Furnishings								
	Blackout Blinds	5	EA	-	-	-	\$ 500.00	\$ 2,500	\$ 2,500
	Standard Blinds	10	EA	-	-	-	\$ 400.00	\$ 4,000	\$ 4,000
				-	-	-	\$ -	\$ -	\$ -
				-	-	-	\$ -	\$ -	\$ -
				-	-	-	\$ -	\$ -	\$ -
				-	-	-	\$ -	\$ -	\$ -
Total Furnishings				0.0	\$ -		\$ 6,500	\$ 6,500	

WOODBURN FIRE DEPARTMENT STATION 23 - OPTION # 2

BID DATE: January 30th, 2023

ESTIMATE NUMBER:	22093
ECCO RUN DATE:	01/30/23
EST. LABOR RATE:	\$ 75.00

BASE BID PACKAGE	ESTIMATE	LABOR			MATERIALS		TOTAL		
SPEC	DESCRIPTION	QTY/LF	UNIT	PROD. RATE	LABOR HOURS	TOTAL	MATERIAL PRICE	MATERIAL TOTAL	TOTAL COSTS
210000	Fire Suppression								
	Fire Suppression								
	- Fire sprinklers	5,910	sf	-	-	-	\$ 10.00	\$ 59,100	\$ 59,100
	- Fire pump	1	ea	-	-	-	\$ 27,500	\$ 27,500	\$ 27,500
	- Above-ground fire water supply tank	15,000	gal	-	-	-	\$ 5.00	\$ 75,000	\$ -
				-	-	-	-	-	-
				-	-	-	-	-	-
				-	-	-	-	-	-
				-	-	-	-	-	-
				-	-	-	-	-	-
				-	-	-	-	-	-
				-	-	-	-	-	-
				-	-	-	-	-	-
				-	-	-	-	-	-
				-	-	-	-	-	-
				-	-	-	-	-	-
				-	-	-	-	-	-
				-	-	-	-	-	-
				-	-	-	-	-	-
				-	-	-	-	-	-
				-	-	-	-	-	-
				-	-	-	-	-	-
				-	-	-	-	-	-
				-	-	-	-	-	-
				-	-	-	-	-	-
				-	-	-	-	-	-
				-	-	-	-	-	-
				-	-	-	-	-	-
				-	-	-	-	-	-
				-	-	-	-	-	-
				-	-	-	-	-	-
				-	-	-	-	-	-
				-	-	-	-	-	-
				-	-	-	-	-	-
				-	-	-	-	-	-
				-	-	-	-	-	-
				-	-	-	-	-	-
				-	-	-	-	-	-
				-	-	-	-	-	-
				-	-	-	-	-	-
				-	-	-	-	-	-
				-	-	-	-	-	-
				-	-	-	-	-	-
				-	-	-	-	-	-
				-	-	-	-	-	-
				-	-	-	-	-	-
				-	-	-	-	-	-
				-	-	-	-	-	-
				-	-	-	-	-	-
				-	-	-	-	-	-
				-	-	-	-	-	-
				-	-	-	-	-	-
				-	-	-	-	-	-
				-	-	-	-	-	-
				-	-	-	-	-	-
				-	-	-	-	-	-
				-	-	-	-	-	-
				-	-	-	-	-	-
				-	-	-	-	-	-
				-	-	-	-	-	-
				-	-	-	-	-	-
				-	-	-	-	-	-
				-	-	-	-	-	-
				-	-	-	-	-	-
				-	-	-	-	-	-
				-	-	-	-	-	-
				-	-	-	-	-	-
				-	-	-	-	-	-
				-	-	-	-	-	-
				-	-	-	-	-	-
				-	-	-	-	-	-
				-	-	-	-	-	-
				-	-	-	-	-	-
				-	-	-	-	-	-
				-	-	-	-	-	-
				-	-	-	-	-	-
				-	-	-	-	-	-
				-	-	-	-	-	-
				-	-	-	-	-	-
				-	-	-	-	-	-
				-	-	-	-	-	-
				-	-	-	-	-	-
				-	-	-	-	-	-
				-	-	-	-	-	-
				-	-	-	-	-	-
				-	-	-	-	-	-
				-	-	-	-	-	-
				-	-	-	-	-	-
				-	-	-	-	-	-
				-	-	-	-	-	-
				-	-	-	-	-	-
				-	-	-	-	-	-
				-	-	-	-	-	-
				-	-	-	-	-	-
				-	-	-	-	-	-
				-	-	-	-	-	-
				-	-	-	-	-	-
				-	-	-	-	-	-
				-	-	-	-	-	-
				-	-	-	-	-	-
				-	-	-	-	-	-
				-	-	-	-	-	-
				-	-	-	-	-	-
				-	-	-	-	-	-
				-	-	-	-	-	-
				-	-	-	-	-	-
				-	-	-	-	-	-
				-	-	-	-	-	-
				-	-	-	-	-	-
				-	-	-	-	-	-
				-	-	-	-	-	-
				-	-	-	-	-	-
				-	-	-	-	-	-
				-	-	-	-	-	-
				-	-	-	-	-	-
				-	-	-	-	-	-
				-	-	-	-	-	-
				-	-	-	-	-	-

WOODBURN FIRE DEPARTMENT STATION 23 - OPTION # 2

BID DATE: January 30th, 2023

ESTIMATE NUMBER:	22093
ECCO RUN DATE:	01/30/23
EST. LABOR RATE:	\$ 75.00

BASE BID PACKAGE		ESTIMATE		LABOR			MATERIALS		TOTAL
SPEC	DESCRIPTION	QTY/L	UNIT	PROD. RATE	LABOR HOURS	TOTAL	MATERIAL PRICE	MATERIAL TOTAL	TOTAL COSTS
260000 Electrical									
Electrical									
	Electrical / Communications / Safety / Tapout (10% for D/B)	5,910	sf	-	-	-	\$ 42.35	\$ 250,289	\$ 250,289
	Emergency back-up generator (full load)	1	ea	-	-	-	\$ 75,000	\$ 75,000	\$ 75,000
	Site Lighting Fixtures	13	ea	-	-	-	\$ 3,500.00	\$ 45,500	\$ 45,500
	Site Electrical - Pumphouse / Lighting / Fuel Tank	1	ls	-	-	-	\$ 40,000.00	\$ 40,000	\$ 40,000
				-	-	-	\$ -	\$ -	\$ -
				-	-	-	\$ -	\$ -	\$ -
				-	-	-	\$ -	\$ -	\$ -
				-	-	-	\$ -	\$ -	\$ -
				-	-	-	\$ -	\$ -	\$ -
				-	-	-	\$ -	\$ -	\$ -
				-	-	-	\$ -	\$ -	\$ -
				-	-	-	\$ -	\$ -	\$ -
				-	-	-	\$ -	\$ -	\$ -
				-	-	-	\$ -	\$ -	\$ -
				-	-	-	\$ -	\$ -	\$ -
				-	-	-	\$ -	\$ -	\$ -
				-	-	-	\$ -	\$ -	\$ -
				-	-	-	\$ -	\$ -	\$ -
				-	-	-	\$ -	\$ -	\$ -
				-	-	-	\$ -	\$ -	\$ -
				-	-	-	\$ -	\$ -	\$ -
				-	-	-	\$ -	\$ -	\$ -
				-	-	-	\$ -	\$ -	\$ -
				-	-	-	\$ -	\$ -	\$ -
				-	-	-	\$ -	\$ -	\$ -
				-	-	-	\$ -	\$ -	\$ -
				-	-	-	\$ -	\$ -	\$ -
				-	-	-	\$ -	\$ -	\$ -
				-	-	-	\$ -	\$ -	\$ -
				-	-	-	\$ -	\$ -	\$ -
				-	-	-	\$ -	\$ -	\$ -
				-	-	-	\$ -	\$ -	\$ -
				-	-	-	\$ -	\$ -	\$ -
				-	-	-	\$ -	\$ -	\$ -
				-	-	-	\$ -	\$ -	\$ -
				-	-	-	\$ -	\$ -	\$ -
				-	-	-	\$ -	\$ -	\$ -
				-	-	-	\$ -	\$ -	\$ -
				-	-	-	\$ -	\$ -	\$ -
				-	-	-	\$ -	\$ -	\$ -
				-	-	-	\$ -	\$ -	\$ -
				-	-	-	\$ -	\$ -	\$ -
				-	-	-	\$ -	\$ -	\$ -
				-	-	-	\$ -	\$ -	\$ -
				-	-	-	\$ -	\$ -	\$ -
				-	-	-	\$ -	\$ -	\$ -
				-	-	-	\$ -	\$ -	\$ -
				-	-	-	\$ -	\$ -	\$ -
				-	-	-	\$ -	\$ -	\$ -
				-	-	-	\$ -	\$ -	\$ -
				-	-	-	\$ -	\$ -	\$ -
				-	-	-	\$ -	\$ -	\$ -
				-	-	-	\$ -	\$ -	\$ -
				-	-	-	\$ -	\$ -	\$ -
				-	-	-	\$ -	\$ -	\$ -
				-	-	-	\$ -	\$ -	\$ -
				-	-	-	\$ -	\$ -	\$ -
				-	-	-	\$ -	\$ -	\$ -
				-	-	-	\$ -	\$ -	\$ -
				-	-	-	\$ -	\$ -	\$ -
				-	-	-	\$ -	\$ -	\$ -
				-	-	-	\$ -	\$ -	\$ -
				-	-	-	\$ -	\$ -	\$ -
				-	-	-	\$ -	\$ -	\$ -
				-	-	-	\$ -	\$ -	\$ -
				-	-	-	\$ -	\$ -	\$ -
				-	-	-	\$ -	\$ -	\$ -
				-	-	-	\$ -	\$ -	\$ -
				-	-	-	\$ -	\$ -	\$ -
				-	-	-	\$ -	\$ -	\$ -
				-	-	-	\$ -	\$ -	\$ -
				-	-	-	\$ -	\$ -	\$ -
				-	-	-	\$ -	\$ -	\$ -
				-	-	-	\$ -	\$ -	\$ -
				-	-	-	\$ -	\$ -	\$ -
				-	-	-	\$ -	\$ -	\$ -
				-	-	-	\$ -	\$ -	\$ -
				-	-	-	\$ -	\$ -	\$ -
				-	-	-	\$ -	\$ -	\$ -
				-	-	-	\$ -	\$ -	\$ -
				-	-	-	\$ -	\$ -	\$ -
				-	-	-	\$ -	\$ -	\$ -
				-	-	-	\$ -	\$ -	\$ -
				-	-	-	\$ -	\$ -	\$ -
				-	-	-	\$ -	\$ -	\$ -
				-	-	-	\$ -	\$ -	\$ -
				-	-	-	\$ -	\$ -	\$ -
				-	-	-	\$ -	\$ -	\$ -
				-	-	-	\$ -	\$ -	\$ -
				-	-	-	\$ -	\$ -	\$ -
				-	-	-	\$ -	\$ -	\$ -
				-	-	-	\$ -	\$ -	\$ -
				-	-	-	\$ -	\$ -	\$ -
				-	-	-	\$ -	\$ -	\$ -
				-	-	-	\$ -	\$ -	\$ -
				-	-	-	\$ -	\$ -	\$ -
				-	-	-	\$ -	\$ -	\$ -
				-	-	-	\$ -	\$ -	\$ -
				-	-	-	\$ -	\$ -	\$ -
				-	-	-	\$ -	\$ -	\$ -
				-	-	-	\$ -	\$ -	\$ -
				-	-	-	\$ -	\$ -	\$ -
				-	-	-	\$ -	\$ -	\$ -
				-	-	-	\$ -	\$ -	\$ -
				-	-	-	\$ -	\$ -	\$ -
				-	-	-	\$ -	\$ -	\$ -
				-	-	-	\$ -	\$ -	\$ -
				-	-	-	\$ -	\$ -	\$ -
				-	-	-	\$ -	\$ -	\$ -
				-	-	-	\$ -	\$ -	\$ -

WOODBURN FIRE DEPARTMENT STATION 23 - OPTION # 2

BID DATE: January 30th, 2023

ESTIMATE NUMBER:	22093
ECCO RUN DATE:	01/30/23
EST. LABOR RATE:	\$ 75.00

BASE BID PACKAGE		ESTIMATE		LABOR			MATERIALS		TOTAL
SPEC	DESCRIPTION	QTY/LF	UNIT	PROD. RATE	LABOR HOURS	TOTAL	MATERIAL PRICE	MATERIAL TOTAL	TOTAL COSTS
310000	Earthwork								
	Earthwork								
	Prep / clear site	215,000	SF	-	-	-	\$ 0.15	\$ 32,250	\$ 32,250
	Structural excavation @ footings and slab	236	CY	-	-	-	\$ 37.50	\$ 8,850	\$ 8,850
	Import & grade rock for building pad	158	CY	-	-	-	\$ 55.00	\$ 8,697	\$ 8,697
	Structural ex/ subgrade @ concrete/ a.c. paving	2,864	CY	-	-	-	\$ 37.50	\$ 107,400	\$ 107,400
	Import & grade rock for concrete/ a.c. paving	1,919	CY	-	-	-	\$ 55.00	\$ 105,545	\$ 105,545
	Rough grade balance of site	93,744	SF	-	-	-	\$ 0.25	\$ 23,436	\$ 23,436
	Site surveying & engineering	215,000	SF	-	-	-	\$ 0.15	\$ 32,250	\$ 32,250
	Road Shoulders (2' wide)	3,902	SF	-	-	-	\$ 4.00	\$ 15,608	\$ 15,608
	Culverts / Regrade Drainage	12,776	SF	-	-	-	\$ 2.00	\$ 25,552	\$ 25,552
				-	-	-	\$ -	\$ -	\$ -
				-	-	-	\$ -	\$ -	\$ -
				-	-	-	\$ -	\$ -	\$ -
				-	-	-	\$ -	\$ -	\$ -
				-	-	-	\$ -	\$ -	\$ -
				-	-	-	\$ -	\$ -	\$ -
				-	-	-	\$ -	\$ -	\$ -
				-	-	-	\$ -	\$ -	\$ -
				-	-	-	\$ -	\$ -	\$ -
				-	-	-	\$ -	\$ -	\$ -
				-	-	-	\$ -	\$ -	\$ -
				-	-	-	\$ -	\$ -	\$ -
				-	-	-	\$ -	\$ -	\$ -
				-	-	-	\$ -	\$ -	\$ -
				-	-	-	\$ -	\$ -	\$ -
				-	-	-	\$ -	\$ -	\$ -
				-	-	-	\$ -	\$ -	\$ -
				-	-	-	\$ -	\$ -	\$ -
				-	-	-	\$ -	\$ -	\$ -
				-	-	-	\$ -	\$ -	\$ -
				-	-	-	\$ -	\$ -	\$ -
				-	-	-	\$ -	\$ -	\$ -
				-	-	-	\$ -	\$ -	\$ -
				-	-	-	\$ -	\$ -	\$ -
				-	-	-	\$ -	\$ -	\$ -
				-	-	-	\$ -	\$ -	\$ -
				-	-	-	\$ -	\$ -	\$ -
				-	-	-	\$ -	\$ -	\$ -
				-	-	-	\$ -	\$ -	\$ -
				-	-	-	\$ -	\$ -	\$ -
				-	-	-	\$ -	\$ -	\$ -
				-	-	-	\$ -	\$ -	\$ -
				-	-	-	\$ -	\$ -	\$ -
				-	-	-	\$ -	\$ -	\$ -
				-	-	-	\$ -	\$ -	\$ -
				-	-	-	\$ -	\$ -	\$ -
				-	-	-	\$ -	\$ -	\$ -
				-	-	-	\$ -	\$ -	\$ -
				-	-	-	\$ -	\$ -	\$ -
				-	-	-	\$ -	\$ -	\$ -
				-	-	-	\$ -	\$ -	\$ -
				-	-	-	\$ -	\$ -	\$ -
				-	-	-	\$ -	\$ -	\$ -
				-	-	-	\$ -	\$ -	\$ -
				-	-	-	\$ -	\$ -	\$ -
				-	-	-	\$ -	\$ -	\$ -
				-	-	-	\$ -	\$ -	\$ -
				-	-	-	\$ -	\$ -	\$ -
				-	-	-	\$ -	\$ -	\$ -
				-	-	-	\$ -	\$ -	\$ -
				-	-	-	\$ -	\$ -	\$ -
				-	-	-	\$ -	\$ -	\$ -
				-	-	-	\$ -	\$ -	\$ -
				-	-	-	\$ -	\$ -	\$ -
				-	-	-	\$ -	\$ -	\$ -
				-	-	-	\$ -	\$ -	\$ -
				-	-	-	\$ -	\$ -	\$ -
				-	-	-	\$ -	\$ -	\$ -
				-	-	-	\$ -	\$ -	\$ -
				-	-	-	\$ -	\$ -	\$ -
				-	-	-	\$ -	\$ -	\$ -
				-	-	-	\$ -	\$ -	\$ -
				-	-	-	\$ -	\$ -	\$ -
				-	-	-	\$ -	\$ -	\$ -
				-	-	-	\$ -	\$ -	\$ -
				-	-	-	\$ -	\$ -	\$ -
				-	-	-	\$ -	\$ -	\$ -
				-	-	-	\$ -	\$ -	\$ -
				-	-	-	\$ -	\$ -	\$ -
				-	-	-	\$ -	\$ -	\$ -
				-	-	-	\$ -	\$ -	\$ -
				-	-	-	\$ -	\$ -	\$ -
				-	-	-	\$ -	\$ -	\$ -
				-	-	-	\$ -	\$ -	\$ -
				-	-	-	\$ -	\$ -	\$ -
				-	-	-	\$ -	\$ -	\$ -
				-	-	-	\$ -	\$ -	\$ -
				-	-	-	\$ -	\$ -	\$ -
				-	-	-	\$ -	\$ -	\$ -
				-	-	-	\$ -	\$ -	\$ -
				-	-	-	\$ -	\$ -	\$ -
				-	-	-	\$ -	\$ -	\$ -
				-	-	-	\$ -	\$ -	\$ -
				-	-	-	\$ -	\$ -	\$ -
				-	-	-	\$ -	\$ -	\$ -
				-	-	-	\$ -	\$ -	\$ -
				-	-	-	\$ -	\$ -	\$ -
				-	-	-	\$ -	\$ -	\$ -
				-	-	-	\$ -	\$ -	\$ -
				-	-	-	\$ -	\$ -	\$ -
				-	-	-	\$ -	\$ -	\$ -
				-	-	-	\$ -	\$ -	\$ -
				-	-	-	\$ -	\$ -	\$ -
				-	-	-	\$ -	\$ -	\$ -
				-	-	-	\$ -	\$ -	\$ -
				-	-	-	\$ -	\$ -	\$ -
				-	-	-	\$ -	\$ -	\$ -
				-	-	-			

WOODBURN FIRE DEPARTMENT STATION 23 - OPTION # 2

BID DATE: January 30th, 2023

ESTIMATE NUMBER:	22093
ECCO RUN DATE:	01/30/23
EST. LABOR RATE:	\$ 75.00

BASE BID PACKAGE		ESTIMATE		LABOR			MATERIALS		TOTAL
SPEC	DESCRIPTION	QTY/LF	UNIT	PROD. RATE	LABOR HOURS	TOTAL	MATERIAL PRICE	MATERIAL TOTAL	TOTAL COSTS
320000	Exterior Improvements								
	Exterior Improvements								
	Concrete Training Pad - 6"	45,490	SF	-	-	-	\$ 10.00	\$ 454,900	\$ 454,900
	Concrete Apron - 6"	5,423	SF	-	-	-	\$ 10.00	\$ 54,230	\$ 54,230
	Asphalt	12,594	SF	-	-	-	\$ 3.75	\$ 47,228	\$ 47,228
	Storm Water Drainage Facility	39,982	SF	-	-	-	\$ 1.75	\$ 69,969	\$ 69,969
	Landscaping	93,457	SF	-	-	-	\$ 1.25	\$ 116,821	\$ 116,821
	Wellhead and Pumphouse 15 x 15	235	SF	-	-	-	\$ 225.00	\$ 52,875	\$ 52,875
	Flag Pole	1	EA	-	-	-	\$ 8,500.00	\$ 8,500	\$ 8,500
	Monument Sign	1	LS	-	-	-	\$ 2,500.00	\$ 2,500	\$ 2,500
	Concrete Sidewalk	987	SF	-	-	-	\$ 7.50	\$ 7,403	\$ 7,403
	Standard curb	1,029	LF	-	-	-	\$ 18.50	\$ 19,037	\$ 19,037
	Pavement Markings	1	LS	-	-	-	\$ 1,250.00	\$ 1,250	\$ 1,250
	Parking Bumpers	18	EA	-	-	-	\$ 250.00	\$ 4,500	\$ 4,500
	Bollards	6	EA	-	-	-	\$ 925.00	\$ 5,550	\$ 5,550
	Training Tower (48'x22')	1	EA	-	-	-	\$ 889,000.00	\$ 889,000	\$ 889,000
	Perimeter Fencing	1,507	LF	-	-	-	\$ 100.00	\$ 150,700	\$ 150,700
	2000 Gal. Above Ground Fuel Tank	1	EA	-	-	-	\$ 27,500.00	\$ 27,500	\$ 27,500
				-	-	-	\$ -	\$ -	\$ -
				-	-	-	\$ -	\$ -	\$ -
				-	-	-	\$ -	\$ -	\$ -
				-	-	-	\$ -	\$ -	\$ -
				-	-	-	\$ -	\$ -	\$ -
				-	-	-	\$ -	\$ -	\$ -
				-	-	-	\$ -	\$ -	\$ -
				-	-	-	\$ -	\$ -	\$ -
				-	-	-	\$ -	\$ -	\$ -
				-	-	-	\$ -	\$ -	\$ -
				-	-	-	\$ -	\$ -	\$ -
				-	-	-	\$ -	\$ -	\$ -
				-	-	-	\$ -	\$ -	\$ -
				-	-	-	\$ -	\$ -	\$ -
				-	-	-	\$ -	\$ -	\$ -
				-	-	-	\$ -	\$ -	\$ -
				-	-	-	\$ -	\$ -	\$ -
				-	-	-	\$ -	\$ -	\$ -
				-	-	-	\$ -	\$ -	\$ -
				-	-	-	\$ -	\$ -	\$ -
				-	-	-	\$ -	\$ -	\$ -
				-	-	-	\$ -	\$ -	\$ -
				-	-	-	\$ -	\$ -	\$ -
				-	-	-	\$ -	\$ -	\$ -
				-	-	-	\$ -	\$ -	\$ -
				-	-	-	\$ -	\$ -	\$ -
				-	-	-	\$ -	\$ -	\$ -
				-	-	-	\$ -	\$ -	\$ -
				-	-	-	\$ -	\$ -	\$ -
				-	-	-	\$ -	\$ -	\$ -
				-	-	-	\$ -	\$ -	\$ -
				-	-	-	\$ -	\$ -	\$ -
				-	-	-	\$ -	\$ -	\$ -
				-	-	-	\$ -	\$ -	\$ -
				-	-	-	\$ -	\$ -	\$ -
				-	-	-	\$ -	\$ -	\$ -
				-	-	-	\$ -	\$ -	\$ -
				-	-	-	\$ -	\$ -	\$ -
				-	-	-	\$ -	\$ -	\$ -
				-	-	-	\$ -	\$ -	\$ -
				-	-	-	\$ -	\$ -	\$ -
				-	-	-	\$ -	\$ -	\$ -
				-	-	-	\$ -	\$ -	\$ -
				-	-	-	\$ -	\$ -	\$ -
				-	-	-	\$ -	\$ -	\$ -
				-	-	-	\$ -	\$ -	\$ -
				-	-	-	\$ -	\$ -	\$ -
				-	-	-	\$ -	\$ -	\$ -
				-	-	-	\$ -	\$ -	\$ -
				-	-	-	\$ -	\$ -	\$ -
				-	-	-	\$ -	\$ -	\$ -
				-	-	-	\$ -	\$ -	\$ -
				-	-	-	\$ -	\$ -	\$ -
				-	-	-	\$ -	\$ -	\$ -
				-	-	-	\$ -	\$ -	\$ -
				-	-	-	\$ -	\$ -	\$ -
				-	-	-	\$ -	\$ -	\$ -
				-	-	-	\$ -	\$ -	\$ -
				-	-	-	\$ -	\$ -	\$ -
				-	-	-	\$ -	\$ -	\$ -
				-	-	-	\$ -	\$ -	\$ -
				-	-	-	\$ -	\$ -	\$ -
				-	-	-	\$ -	\$ -	\$ -
				-	-	-	\$ -	\$ -	\$ -
				-	-	-	\$ -	\$ -	\$ -
				-	-	-	\$ -	\$ -	\$ -
				-	-	-	\$ -	\$ -	\$ -
				-	-	-	\$ -	\$ -	\$ -
				-	-	-	\$ -	\$ -	\$ -
				-	-	-	\$ -	\$ -	\$ -
				-	-	-	\$ -	\$ -	\$ -
				-	-	-	\$ -	\$ -	\$ -
				-	-	-	\$ -	\$ -	\$ -
				-	-	-	\$ -	\$ -	\$ -
				-	-	-	\$ -	\$ -	\$ -
				-	-	-	\$ -	\$ -	\$ -
				-	-	-	\$ -	\$ -	\$ -
				-	-	-	\$ -	\$ -	\$ -
				-	-	-	\$ -	\$ -	\$ -
				-	-	-	\$ -	\$ -	\$ -
				-	-	-	\$ -	\$ -	\$ -
				-	-	-	\$ -	\$ -	\$ -
				-	-	-	\$ -	\$ -	\$ -
				-	-	-	\$ -	\$ -	\$ -
				-	-	-	\$ -	\$ -	\$ -
				-	-	-	\$ -	\$ -	\$ -
				-	-	-	\$ -	\$ -	\$ -
				-	-	-	\$ -	\$ -	\$ -
				-	-	-			

WOODBURN FIRE DEPARTMENT STATION 23 - OPTION # 2

BID DATE: January 30th, 2023

ESTIMATE NUMBER:	22093
ECCO RUN DATE:	01/30/23
EST. LABOR RATE:	\$ 75.00

BASE BID PACKAGE		ESTIMATE		LABOR			MATERIALS		TOTAL
SPEC	DESCRIPTION	QTY/L	UNIT	PROD. RATE	LABOR HOURS	TOTAL	MATERIAL PRICE	MATERIAL TOTAL	TOTAL COSTS
330000 Utilities									
Utilities									
				-		\$ -		\$ -	\$ -
	- Water distribution	350	lf	-		\$ -	\$ 125.00	\$ 43,750	\$ 43,750
	- Sanitary main line to drain field	120	lf	-		\$ -	\$ 110.00	\$ 13,200	\$ 13,200
	- Septic drain tank & field	540	lf	-		\$ -	\$ 65.00	\$ 35,100	\$ 35,100
	- Storm water distribution			-		\$ -		\$ -	\$ -
	- catch basins	8	ea	-		\$ -	\$ 3,500.00	\$ 28,000	\$ 28,000
	- storm pipe	1,000	lf	-		\$ -	\$ 95.00	\$ 95,000	\$ 95,000
	Well Drilling	1	ls	-		\$ -	\$ 89,000.00	\$ 89,000	\$ 89,000
	Well Pumps	2	ea	-		\$ -	\$ 5,000.00	\$ 10,000	\$ 10,000
	Well Treatment Skid	1	ea	-		\$ -	\$ 5,000.00	\$ 5,000	\$ 5,000
	30000 gallon cistern - furnish	1	ea	-		\$ -	\$ 75,000.00	\$ 75,000	\$ 75,000
	30000 gallon cistern - install	2	ea	-		\$ -	\$ 15,000.00	\$ 30,000	\$ 30,000
	Cistern distribution pump w /electrical	2	ea	-		\$ -	\$ 20,000.00	\$ 40,000	\$ 40,000
	Drafting Accessories	1	ea	-		\$ -	\$ 10,000.00	\$ 10,000	\$ 10,000
	Hydrant loop (6")	925	lf	-		\$ -	\$ 130.00	\$ 120,250	\$ 120,250
	Site hydrants	5	ea	-		\$ -	\$ 2,000.00	\$ 10,000	\$ 10,000
				-		\$ -		\$ -	\$ -
				-		\$ -		\$ -	\$ -
				-		\$ -		\$ -	\$ -
				-		\$ -		\$ -	\$ -
				-		\$ -		\$ -	\$ -
	Small Tools & Equipment	0	hrs				\$ 8.05	\$ -	\$ -
Total Utilities				0.0		\$ -		\$ 604,300	\$ 604,300



3450 n williams avenue | suite 07
portland | oregon | 97227
o 503.227.8100
orangewallstudios.com

Memo – Estimated A/E Fees

Project: 22022 Woodburn-Gervais Fire Station
Date: February 9th, 2023
To: Fire Chief Joe Budge (WGFD)
CC: Jordan Fell (ECC), Jeff Erwin (OWS), Gary Hartill (OWS)
Author: ORANGEWALLstudios

A/E Fee Estimate : Woodburn-Gervais Fire Station with CERT wing

See attached appendix documents for scoping reference:
2023_0130 – Woodburn-Gervais Fire Station – CERT Option.pdf
2023_0209 – Woodburn-Gervais Fire Station – Site Diagram.pdf

The fee estimates listed below are based on a Construction Budget provided by Emerick Construction Co., dated January 30th, 2023. Estimated fees are broken down by design phase and fee per consultant.

- 1. Pre-Design
 - a. Architectural : \$7,300
 - b. Civil : \$3,750

- 2. Site Planning / Concept
 - a. Architectural : \$7,300
 - b. Civil : \$3,750

- 3. Schematic Design
 - a. Architectural : \$14,600
 - b. Civil : \$7,500
 - c. Structural : \$10,000
 - d. MEPF : \$23,000
 - e. Landscape : \$2,500

- 4. Design Development
 - a. Architectural : \$29,200
 - b. Civil : \$15,000
 - c. Structural : \$10,000
 - d. MEPF : \$28,750
 - e. Landscape : \$2,500



3450 n williams avenue | suite 07
portland | oregon | 97227
o 503.227.8100
orangewallstudios.com

- 5. Construction Documents
 - a. Architectural : \$43,800
 - b. Civil : \$22,500
 - c. Structural : \$10,000
 - d. MEPF : \$34,500
 - e. Landscape : \$3,300

- 6. Bidding / Permitting
 - a. Architectural : \$4,000
 - b. Civil : \$7,500
 - c. Structural : \$2,000
 - d. MEPF : \$5,750
 - e. Landscape : \$500

- 7. Construction Administration (9-month construction duration assumed)
 - a. Architectural : \$29,200
 - b. Civil : \$15,000
 - c. Structural : \$8,000
 - d. MEPF : \$23,000
 - e. Landscape : \$1,000

Subtotal :

Architectural :	\$146,000
Consultant Markup :	\$24,000
Civil :	\$75,000
Structural :	\$40,000
MEPF :	\$100,000
Fire Pump Design :	\$15,000
Landscape :	\$10,000

Total : \$410,000

Once funding has been secured, the estimates above will be refined based on clarified scope expectations. Feel free to reach out with any questions.

End of Memo